

Ebi3 Polyclonal Antibody

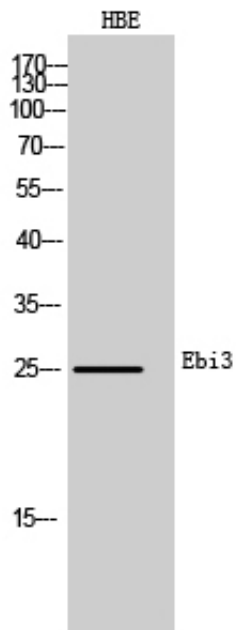
Catalog_no :	AT5645
Applications :	WB,ELISA
Reactivity :	Human,Mouse
Category :	抗原抗体
Size :	100µg/50µg/20µg
Gene_name :	EBI3
Protein_name :	Interleukin-27 subunit beta
Humangene_id :	10148
Humanswissprot_no :	Q14213
Mousegene_id :	50498
Mouseswissprot_no :	O35228
Ratgene_id :	
Ratswissprot_no :	
Immunogen :	The antiserum was produced against synthesized peptide derived from the Internal region of human EBI3. AA range:101-150
Specificity :	Ebi3 Polyclonal Antibody detects endogenous levels of Ebi3 protein.
Formulation :	Liquid in PBS containing 50% glycerol, 0.5% BSA and 0.02% sodium azide.
Source :	Rabbit
Dilution :	Western Blot: 1/500 - 1/2000. ELISA: 1/10000. Not yet tested in other applications.
Purification :	The antibody was affinity-purified from rabbit antiserum by affinity-chromatography using epitope-specific immunogen.
Concentration :	1 mg/ml
Storage_stability :	-20°C/1 year
Msds :	MSDS_Antibody.pdf



Other_name : EB13; IL27B; Interleukin-27 subunit beta; IL-27 subunit beta; IL-27B; Epstein-Barr virus-induced gene 3 protein; EBV-induced gene 3 protein

Molecular Weight : 25KD

Product Images



Western Blot analysis of HBE cells using Ebi3 Polyclonal Antibody.. Secondary antibody was diluted at 1:20000