



## GDF-3 Polyclonal Antibody

|                     |  |
|---------------------|--|
| Catalog_no :        | <u>AT5646</u>  |
| Applications :      | <u>WB,ELISA</u>  |
| Reactivity :        | <u>Human</u>   |
| Category :          | <u>抗原抗体</u>  |
| Size :              | <u>100µg/50µg/20µg</u>   |
| Gene_name :         | <u>GDF3</u>  |
| Protein_name :      | <u>Growth/differentiation factor 3</u>   |
| Humangene_id :      | <u><a href="#">9573</a></u>  |
| Humanswissprot_no : | <u><a href="#">Q9NR23</a></u>  |
| Mousegene_id :      | <u><a href="#">14562</a></u>   |
| Mouseswissprot_no : | <u><a href="#">Q07104</a></u>  |
| Ratgene_id :        | <u></u>  |
| Ratswissprot_no :   | <u></u>  |
| Immunogen :         | <u>Synthesized peptide derived from Growth/differentiation factor 3 at AA range: 311-360</u>                                 |
| Specificity :       | <u>GDF-3 Polyclonal Antibody detects endogenous levels of GDF-3 protein.</u>   |
| Formulation :       | <u>Liquid in PBS containing 50% glycerol, 0.5% BSA and 0.02% sodium azide.</u>   |
| Source :            | <u>Rabbit</u>  |
| Dilution :          | <u>Western Blot: 1/500 - 1/2000. ELISA: 1/10000. Not yet tested in other applications.</u>                                   |
| Purification :      | <u>The antibody was affinity-purified from rabbit antiserum by affinity-chromatography using epitope-specific immunogen.</u> |
| Concentration :     | <u>1 mg/ml</u>   |
| Storage_stability : | <u>-20°C/1 year</u>  |
| Msds :              | <u><a href="#">MSDS_Antibody.pdf</a></u>   |
| Other_name :        | <u>GDF3; Growth/differentiation factor 3; GDF-3</u>  |

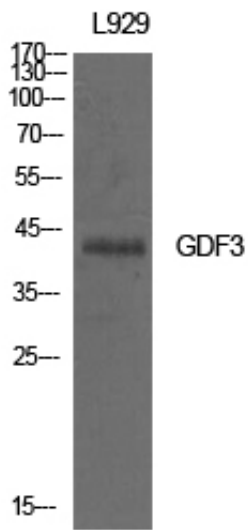


Molecular  
Weight :

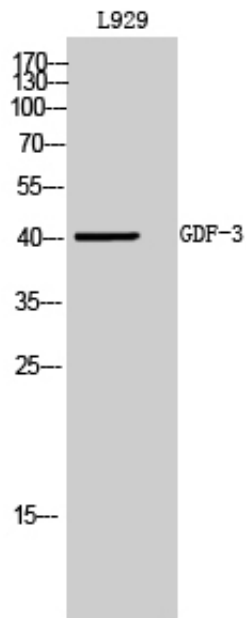
41KD

---

## Product Images



Western Blot analysis of L929 cells using GDF-3 Polyclonal Antibody. Antibody was diluted at 1:500. Secondary antibody was diluted at 1:20000



Western Blot analysis of L929 cells using GDF-3 Polyclonal Antibody diluted at 1 : 500. Secondary antibody was diluted at 1:20000

Western Blot analysis of K562 KB using GDF-3 Polyclonal Antibody diluted at 1:500. Secondary antibody was diluted at 1:20000

