

Neuregulin-3 Polyclonal Antibody

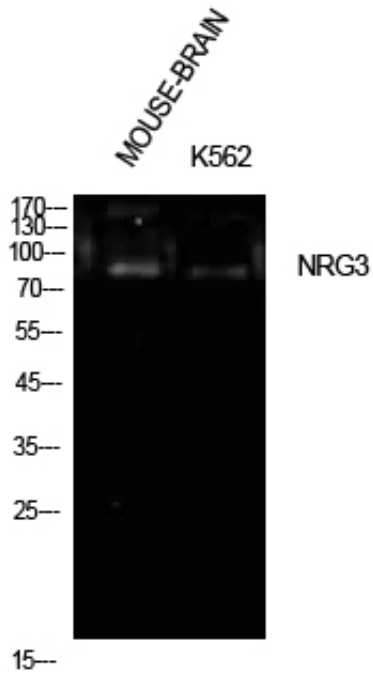
Catalog_no :	AT5648
Applications :	WB,IHC-p,ELISA
Reactivity :	Human,Mouse
Category :	抗原抗体
Size :	100µg/50µg/20µg
Gene_name :	NRG3
Protein_name :	Pro-neuregulin-3 membrane-bound isoform
Humangene_id :	10718
Humanswissprot_no :	P56975
Mousegene_id :	18183
Mouseswissprot_no :	O35181
Ratgene_id :	
Ratswissprot_no :	
Immunogen :	The antiserum was produced against synthesized peptide derived from the Internal region of human NRG3. AA range:311-360
Specificity :	Neuregulin-3 Polyclonal Antibody detects endogenous levels of Neuregulin-3 protein.
Formulation :	Liquid in PBS containing 50% glycerol, 0.5% BSA and 0.02% sodium azide.
Source :	Rabbit
Dilution :	Western Blot: 1/500 - 1/2000. IHC-p: 1:100-1:300. ELISA: 1/10000. Not yet tested in other applications.
Purification :	The antibody was affinity-purified from rabbit antiserum by affinity-chromatography using epitope-specific immunogen.
Concentration :	1 mg/ml
Storage_stability :	-20°C/1 year
Msds :	MSDS_Antibody.pdf



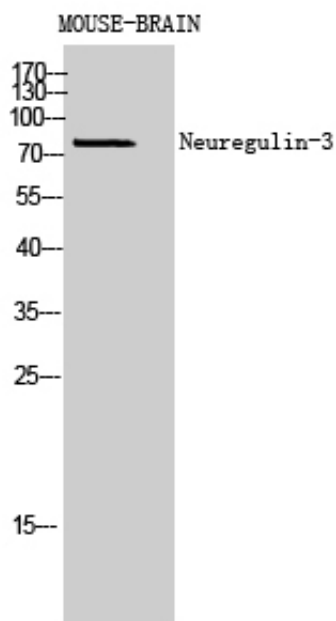
Other_name : NRG3; Pro-neuregulin-3, membrane-bound isoform; Pro-NRG3

Molecular Weight : 80KD

Product Images

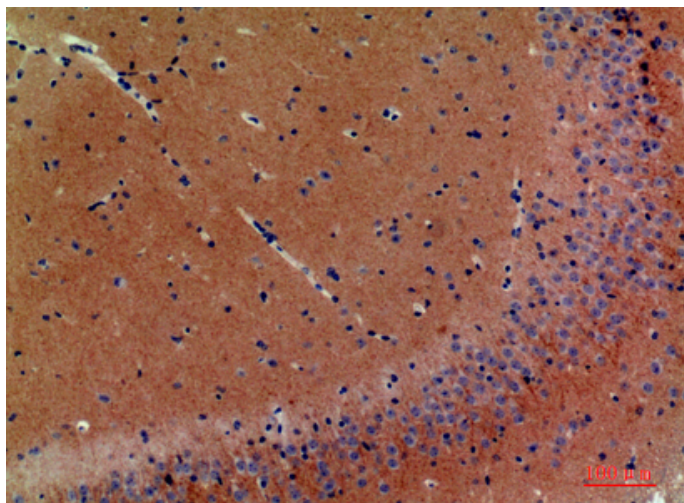


Western Blot analysis of mouse brain, K562 cells using Neuregulin-3 Polyclonal Antibody. Antibody was diluted at 1:1000. Secondary antibody was diluted at 1:20000

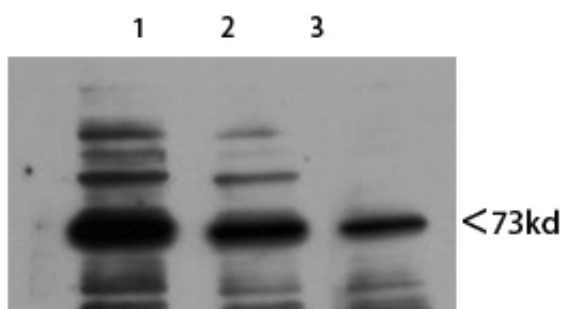


Western Blot analysis of MOUSE-BRAIN cells using Neuregulin-3 Polyclonal Antibody diluted at 1 : 1000. Secondary antibody was diluted at 1:20000

Immunohistochemical analysis of paraffin-embedded mouse-brain, antibody was diluted at 1:200



Western Blot analysis of mouse-heart mouse-brain mouse-lung using Neuregulin-3 Polyclonal Antibody diluted at 1:800. Secondary antibody was diluted at 1:20000



1 mouse-heart
2 mouse-brain
3 mouse-lung