



NTN Polyclonal Antibody

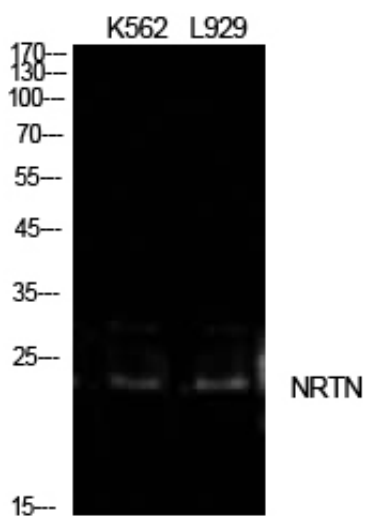
Catalog_no :	<u>AT5649</u>
Applications :	<u>WB,ELISA</u>
Reactivity :	<u>Human</u>
Category :	<u>抗原抗体</u>
Size :	<u>100µg/50µg/20µg</u>
Gene_name :	<u>NRTN</u>
Protein_name :	<u>Neurturin</u>
Humangene_id	<u>4902</u>
:	<u></u>
Humanswissprot	<u>Q99748</u>
_no :	<u></u>
Mousegene_id :	<u>18188</u>
Mouseswissprot	<u>P97463</u>
_no :	<u></u>
Ratgene_id :	<u></u>
Ratswissprot_no	<u></u>
:	<u></u>
Immunogen :	<u>The antiserum was produced against synthesized peptide derived from the Internal region of human NRTN. AA range:111-160</u>
Specificity :	<u>NTN Polyclonal Antibody detects endogenous levels of NTN protein.</u>
Formulation :	<u>Liquid in PBS containing 50% glycerol, 0.5% BSA and 0.02% sodium azide.</u>
Source :	<u>Rabbit</u>
Dilution :	<u>Western Blot: 1/500 - 1/2000. ELISA: 1/10000. Not yet tested in other applications.</u>
Purification :	<u>The antibody was affinity-purified from rabbit antiserum by affinity-chromatography using epitope-specific immunogen.</u>
Concentration :	<u>1 mg/ml</u>
Storage_stability	<u>-20°C/1 year</u>
:	<u></u>
Msds :	<u>MSDS_Antibody.pdf</u>



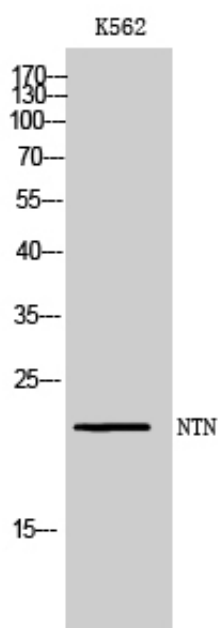
Other_name : NRTN; Neurturin

Molecular Weight : 22KD

Product Images



Western Blot analysis of K562, L929 cells using NTN Polyclonal Antibody. Antibody was diluted at 1:1000. Secondary antibody was diluted at 1:20000



Western Blot analysis of K562 cells using NTN Polyclonal Antibody diluted at 1 : 1000. Secondary antibody was diluted at 1:20000