

GDF-6 Polyclonal Antibody

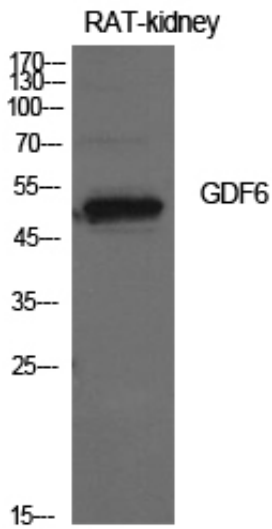
Catalog_no :	AT5653
Applications :	WB,ELISA
Reactivity :	Human,Mouse,Rat
Category :	抗原抗体
Size :	100µg/50µg/20µg
Gene_name :	GDF6
Protein_name :	Growth/differentiation factor 6
Humangene_id :	392255
Humanswissprot_no :	Q6KF10
Mousegene_id :	242316
Mouseswissprot_no :	P43028
Ratgene_id :	252834
Ratswissprot_no :	Q6HA10
Immunogen :	The antiserum was produced against synthesized peptide derived from the Internal region of human GDF6. AA range:311-360
Specificity :	GDF-6 Polyclonal Antibody detects endogenous levels of GDF-6 protein.
Formulation :	Liquid in PBS containing 50% glycerol, 0.5% BSA and 0.02% sodium azide.
Source :	Rabbit
Dilution :	Western Blot: 1/500 - 1/2000. ELISA: 1/10000. Not yet tested in other applications.
Purification :	The antibody was affinity-purified from rabbit antiserum by affinity-chromatography using epitope-specific immunogen.
Concentration :	1 mg/ml
Storage_stability :	-20°C/1 year
Msds :	MSDS_Antibody.pdf



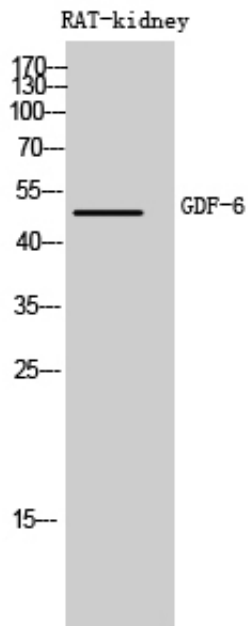
Other_name : GDF6; GDF16; Growth/differentiation factor 6; GDF-6; Growth/differentiation factor 16

Molecular Weight : 50KD

Product Images



Western Blot analysis of rat kidney cells using GDF-6 Polyclonal Antibody. Antibody was diluted at 1:500. Secondary antibody was diluted at 1:20000



Western Blot analysis of RAT-kidney cells using GDF-6 Polyclonal Antibody diluted at 1 : 500. Secondary antibody was diluted at 1:20000

Western Blot analysis of 293T using GDF-6 Polyclonal Antibody diluted at 1:500. Secondary antibody was diluted at 1:20000

