



## GDF-7 Polyclonal Antibody

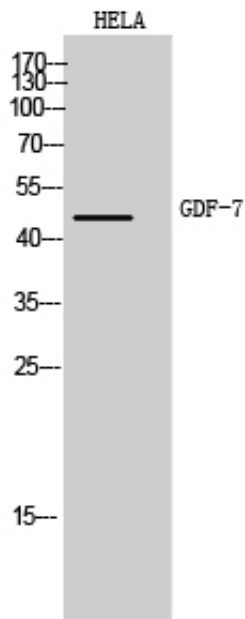
Catalog_no :	<u>AT5654</u>
Applications :	<u>WB,IHC-p,ELISA</u>
Reactivity :	<u>Human,Mouse,Rat</u>
Category :	<u>抗原抗体</u>
Size :	<u>100µg/50µg/20µg</u>
Gene_name :	<u>GDF7</u>
Protein_name :	<u>Growth/differentiation factor 7</u>
Humangene_id :	<u><a href="#">151449</a></u>
Humanswissprot_no :	<u><a href="#">Q7Z4P5</a></u>
Mousegene_id :	<u><a href="#">238057</a></u>
Mouseswissprot_no :	<u><a href="#">P43029</a></u>
Ratgene_id :	<u></u>
Ratswissprot_no :	<u></u>
Immunogen :	<u>The antiserum was produced against synthesized peptide derived from the Internal region of human GDF7. AA range:321-370</u>
Specificity :	<u>GDF-7 Polyclonal Antibody detects endogenous levels of GDF-7 protein.</u>
Formulation :	<u>Liquid in PBS containing 50% glycerol, 0.5% BSA and 0.02% sodium azide.</u>
Source :	<u>Rabbit</u>
Dilution :	<u>Western Blot: 1/500 - 1/2000. IHC-p: 1:100-1:300. ELISA: 1/10000. Not yet tested in other applications.</u>
Purification :	<u>The antibody was affinity-purified from rabbit antiserum by affinity-chromatography using epitope-specific immunogen.</u>
Concentration :	<u>1 mg/ml</u>
Storage_stability :	<u>-20°C/1 year</u>
Msds :	<u>MSDS_Antibody.pdf</u>



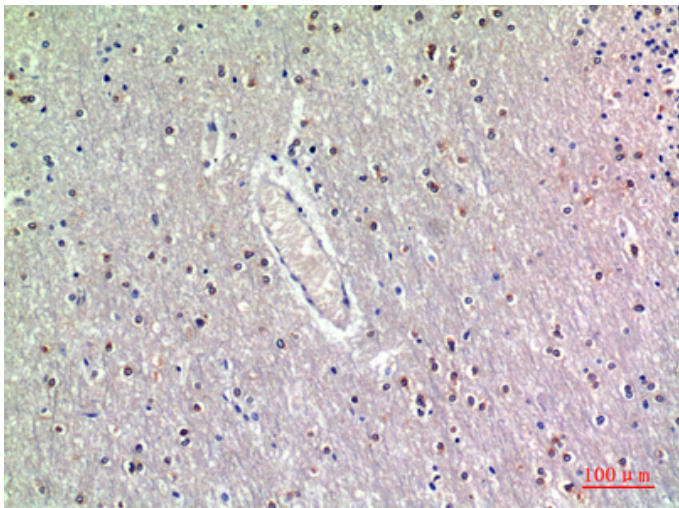
Other\_name : GDF7; Growth/differentiation factor 7; GDF-7

Molecular Weight : 47KD

## Product Images



Western Blot analysis of Hela cells using GDF-7 Polyclonal Antibody. Antibody was diluted at 1:1000. Secondary antibody was diluted at 1:20000



Immunohistochemical analysis of paraffin-embedded human-brain, antibody was diluted at 1:200