

BMP-6 Polyclonal Antibody

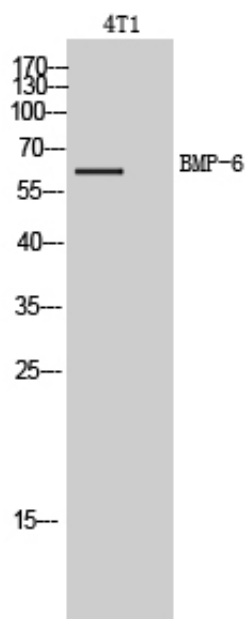
Catalog_no :	AT5655
Applications :	WB,ELISA
Reactivity :	Human,Mouse,Rat
Category :	抗原抗体
Size :	100µg/50µg/20µg
Gene_name :	BMP6
Protein_name :	Bone morphogenetic protein 6
Humangene_id :	654
Humanswissprot_no :	P22004
Mousegene_id :	12161
Mouseswissprot_no :	P20722
Ratgene_id :	25644
Ratswissprot_no :	Q04906
Immunogen :	The antiserum was produced against synthesized peptide derived from the Internal region of human BMP6. AA range:341-390
Specificity :	BMP-6 Polyclonal Antibody detects endogenous levels of BMP-6 protein.
Formulation :	Liquid in PBS containing 50% glycerol, 0.5% BSA and 0.02% sodium azide.
Source :	Rabbit
Dilution :	Western Blot: 1/500 - 1/2000. ELISA: 1/10000. Not yet tested in other applications.
Purification :	The antibody was affinity-purified from rabbit antiserum by affinity-chromatography using epitope-specific immunogen.
Concentration :	1 mg/ml
Storage_stability :	-20°C/1 year
Msds :	MSDS_Antibody.pdf



Other_name : BMP6; VGR; Bone morphogenetic protein 6; BMP-6; VG-1-related protein; VG-1-R; VGR-1

Molecular Weight : 60KD

Product Images



Western Blot analysis of 4T1 cells using BMP-6 Polyclonal Antibody.. Secondary antibody was diluted at 1:20000