

Epigen Polyclonal Antibody

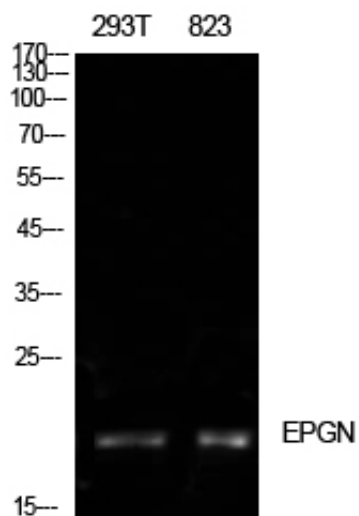
Catalog_no :	AT5656
Applications :	WB,ELISA
Reactivity :	Human
Category :	抗原抗体
Size :	100µg/50µg/20µg
Gene_name :	EPGN
Protein_name :	Epigen
Humangene_id :	255324
Humanswissprot_no :	Q6UW88
Mousegene_id :	71920
Mouseswissprot_no :	Q924X1
Ratgene_id :	
Ratswissprot_no :	
Immunogen :	The antiserum was produced against synthesized peptide derived from the Internal region of human EPGN. AA range:11-60
Specificity :	Epigen Polyclonal Antibody detects endogenous levels of Epigen protein.
Formulation :	Liquid in PBS containing 50% glycerol, 0.5% BSA and 0.02% sodium azide.
Source :	Rabbit
Dilution :	Western Blot: 1/500 - 1/2000. ELISA: 1/10000. Not yet tested in other applications.
Purification :	The antibody was affinity-purified from rabbit antiserum by affinity-chromatography using epitope-specific immunogen.
Concentration :	1 mg/ml
Storage_stability :	-20°C/1 year
Msds :	MSDS_Antibody.pdf



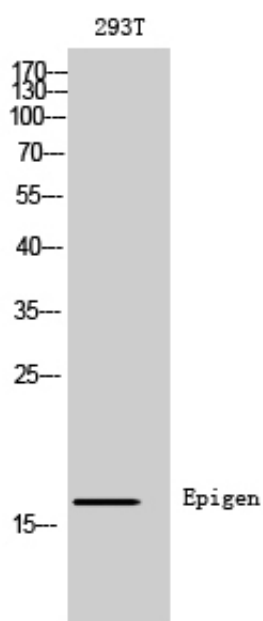
Other_name : EPGN; Epigen; Epithelial mitogen; EPG

Molecular Weight : 17KD

Product Images



Western Blot analysis of 293T, 823 cells using Epigen Polyclonal Antibody. Antibody was diluted at 1:500. Secondary antibody was diluted at 1:20000



Western Blot analysis of 293T cells using Epigen Polyclonal Antibody diluted at 1 : 500. Secondary antibody was diluted at 1:20000