

IRF-1 Polyclonal Antibody

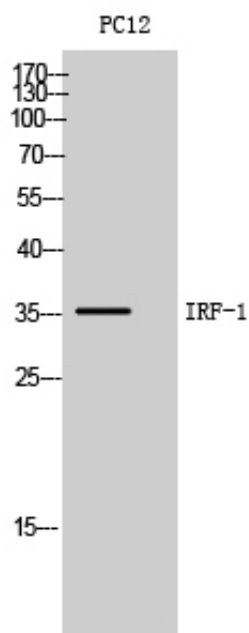
| | |
|---------------------|--|
| Catalog_no : | AT5657 |
| Applications : | WB,ELISA |
| Reactivity : | Human,Mouse,Rat |
| Category : | 抗原抗体 |
| Size : | 100µg/50µg/20µg |
| Gene_name : | IRF1 |
| Protein_name : | Interferon regulatory factor 1 |
| Humangene_id : | 3659 |
| Humanswissprot_no : | P10914 |
| Mousegene_id : | 16362 |
| Mouseswissprot_no : | P15314 |
| Ratgene_id : | 24508 |
| Ratswissprot_no : | P23570 |
| Immunogen : | The antiserum was produced against synthesized peptide derived from the Internal region of human IRF1. AA range:91-140 |
| Specificity : | IRF-1 Polyclonal Antibody detects endogenous levels of IRF-1 protein. |
| Formulation : | Liquid in PBS containing 50% glycerol, 0.5% BSA and 0.02% sodium azide. |
| Source : | Rabbit |
| Dilution : | Western Blot: 1/500 - 1/2000. ELISA: 1/10000. Not yet tested in other applications. |
| Purification : | The antibody was affinity-purified from rabbit antiserum by affinity-chromatography using epitope-specific immunogen. |
| Concentration : | 1 mg/ml |
| Storage_stability : | -20°C/1 year |
| Msds : | MSDS_Antibody.pdf |



Other_name : IRF1; Interferon regulatory factor 1; IRF-1

Molecular Weight : 36KD

Product Images



Western Blot analysis of PC12 cells using IRF-1 Polyclonal Antibody.. Secondary antibody was diluted at 1:20000 cells nucleus extracted by Minute TM Cytoplasmic and Nuclear Fractionation kit (SC-003, Invent biotech, MN, USA).