



FUNDC1 Polyclonal Antibody

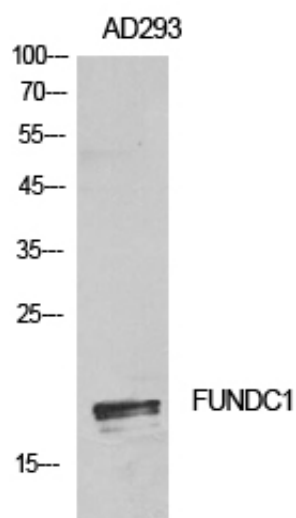
Catalog_no :	<u>AT5658</u>
Applications :	<u>WB,ELISA</u>
Reactivity :	<u>Human,Mouse,Rat</u>
Category :	<u>抗原抗体</u>
Size :	<u>100µg/50µg/20µg</u>
Gene_name :	<u>FUNDC1</u>
Protein_name :	<u>FUN14 domain-containing protein 1</u>
Humangene_id :	<u>139341</u>
Humanswissprot_no :	<u>Q8IVP5</u>
Mousegene_id :	<u>72018</u>
Mouseswissprot_no :	<u>Q9DB70</u>
Ratgene_id :	<u>363442</u>
Ratswissprot_no :	<u>Q5BJS4</u>
Immunogen :	<u>The antiserum was produced against synthesized peptide derived from the N-terminal region of human FUNDC1. AA range:1-50</u>
Specificity :	<u>FUNDC1 Polyclonal Antibody detects endogenous levels of FUNDC1 protein.</u>
Formulation :	<u>Liquid in PBS containing 50% glycerol, 0.5% BSA and 0.02% sodium azide.</u>
Source :	<u>Rabbit</u>
Dilution :	<u>Western Blot: 1/500 - 1/2000. ELISA: 1/10000. Not yet tested in other applications.</u>
Purification :	<u>The antibody was affinity-purified from rabbit antiserum by affinity-chromatography using epitope-specific immunogen.</u>
Concentration :	<u>1 mg/ml</u>
Storage_stability :	<u>-20°C/1 year</u>
Msds :	<u>MSDS_Antibody.pdf</u>



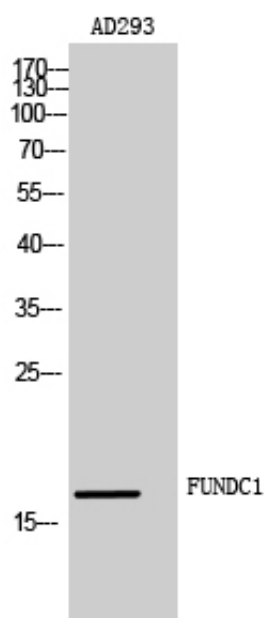
Other_name : FUNDC1; FUN14 domain-containing protein 1

Molecular Weight : 17KD

Product Images



Western Blot analysis of AD293 cells using FUNDC1 Polyclonal Antibody. Antibody was diluted at 1:500. Secondary antibody was diluted at 1:20000



Western Blot analysis of AD293 cells using FUNDC1 Polyclonal Antibody diluted at 1 : 500. Secondary antibody was diluted at 1:20000