

## Tensin-2 Polyclonal Antibody

Catalog_no :	AT5659
Applications :	WB,ELISA
Reactivity :	Human,Mouse
Category :	抗原抗体
Size :	100µg/50µg/20µg
Gene_name :	TENC1
Protein_name :	Tensin-like C1 domain-containing phosphatase
Humangene_id :	<a href="#">23371</a>
Humanswissprot_no :	<a href="#">Q63HR2</a>
Mousegene_id :	<a href="#">209039</a>
Mouseswissprot_no :	<a href="#">Q8CGB6</a>
Ratgene_id :	
Ratswissprot_no :	
Immunogen :	The antiserum was produced against synthesized peptide derived from human Tensin-2. AA range:439-488
Specificity :	Tensin-2 Polyclonal Antibody detects endogenous levels of Tensin-2 protein.
Formulation :	Liquid in PBS containing 50% glycerol, 0.5% BSA and 0.02% sodium azide.
Source :	Rabbit
Dilution :	Western Blot: 1/500 - 1/2000. ELISA: 1/10000. Not yet tested in other applications.
Purification :	The antibody was affinity-purified from rabbit antiserum by affinity-chromatography using epitope-specific immunogen.
Concentration :	1 mg/ml
Storage_stability :	-20°C/1 year
Msds :	<a href="#">MSDS_Antibody.pdf</a>



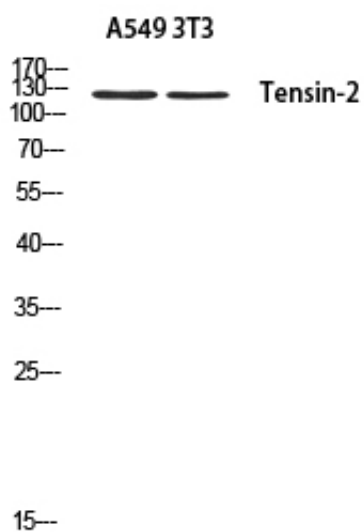
Other\_name : TENC1; KIAA1075; TNS2; Tensin-like C1 domain-containing phosphatase; C1 domain-containing phosphatase and tensin homolog; C1-TEN; Tensin-2

---

Molecular Weight : 125KD

---

## Product Images



Western blot analysis of A549 3T3 using Tensin-2 antibody. Antibody was diluted at 1:500. Secondary antibody was diluted at 1:20000