

CD11b Polyclonal Antibody

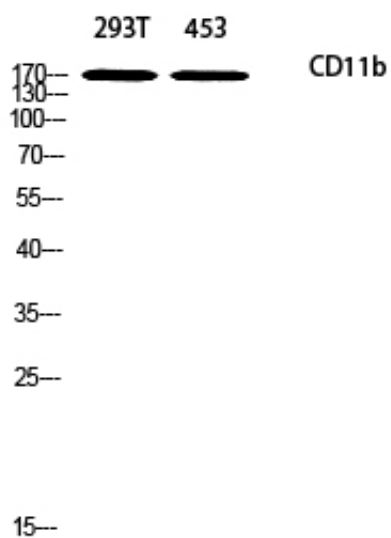
Catalog_no :	AT5660
Applications :	WB,ELISA
Reactivity :	Human,Mouse
Category :	抗原抗体
Size :	100µg/50µg/20µg
Gene_name :	ITGAM
Protein_name :	Integrin alpha-M
Humangene_id :	3684
Humanswissprot_no :	P11215
Mousegene_id :	
Mouseswissprot_no :	P05555
Ratgene_id :	
Ratswissprot_no :	
Immunogen :	The antiserum was produced against synthesized peptide derived from human CD11b. AA range:769-818
Specificity :	CD11b Polyclonal Antibody detects endogenous levels of CD11b protein.
Formulation :	Liquid in PBS containing 50% glycerol, 0.5% BSA and 0.02% sodium azide.
Source :	Rabbit
Dilution :	Western Blot: 1/500 - 1/2000. ELISA: 1/10000. Not yet tested in other applications.
Purification :	The antibody was affinity-purified from rabbit antiserum by affinity-chromatography using epitope-specific immunogen.
Concentration :	1 mg/ml
Storage_stability :	-20°C/1 year
Msds :	MSDS_Antibody.pdf



Other_name : ITGAM; CD11B; CR3A; Integrin alpha-M; CD11 antigen-like family member B; CR-3 alpha chain; Cell surface glycoprotein MAC-1 subunit alpha; Leukocyte adhesion receptor MO1; Neutrophil adherence receptor; CD11b

Molecular Weight : 170KD

Product Images



Western blot analysis of 293T 453 using CD11b antibody. Antibody was diluted at 1:1000. Secondary antibody was diluted at 1:20000 cells nucleus extracted by Minute TM Cytoplasmic and Nuclear Fractionation kit (SC-003, Invent biotech, MN, USA).