

RNase III Drosha Polyclonal Antibody

Catalog_no :	AT5661
Applications :	WB,IHC-p,ELISA
Reactivity :	Human,Mouse
Category :	抗原抗体
Size :	100µg/50µg/20µg
Gene_name :	DROSHA
Protein_name :	Ribonuclease 3
Humangene_id :	29102
Humanswissprot_no :	Q9NRR4
Mousegene_id :	14000
Mouseswissprot_no :	Q5HZJ0
Ratgene_id :	
Ratswissprot_no :	
Immunogen :	The antiserum was produced against synthesized peptide derived from human RNase III Drosha. AA range:774-823
Specificity :	RNase III Drosha Polyclonal Antibody detects endogenous levels of RNase III Drosha protein.
Formulation :	Liquid in PBS containing 50% glycerol, 0.5% BSA and 0.02% sodium azide.
Source :	Rabbit
Dilution :	Western Blot: 1/500 - 1/2000. IHC-p: 1:100-1:300. ELISA: 1/10000. Not yet tested in other applications.
Purification :	The antibody was affinity-purified from rabbit antiserum by affinity-chromatography using epitope-specific immunogen.
Concentration :	1 mg/ml
Storage_stability :	-20°C/1 year

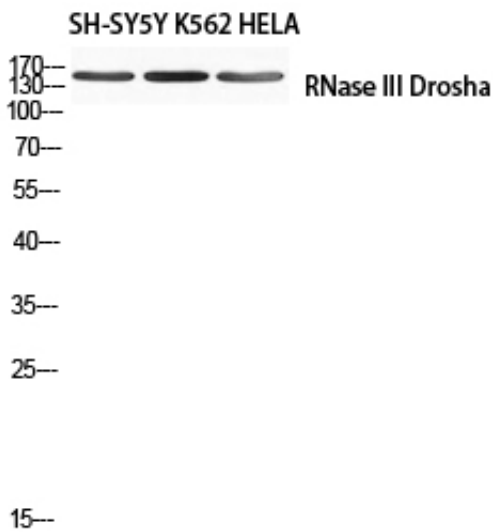


MsdS : MSDS_Antibody.pdf

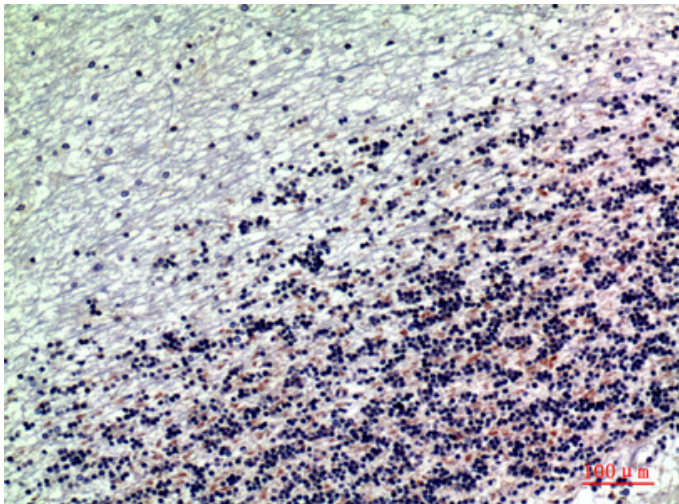
Other_name : DROSHA; RN3; RNASE3L; RNASEN; Ribonuclease 3; Protein Drosha; Ribonuclease III; RNase III; p241

Molecular Weight : 160KD

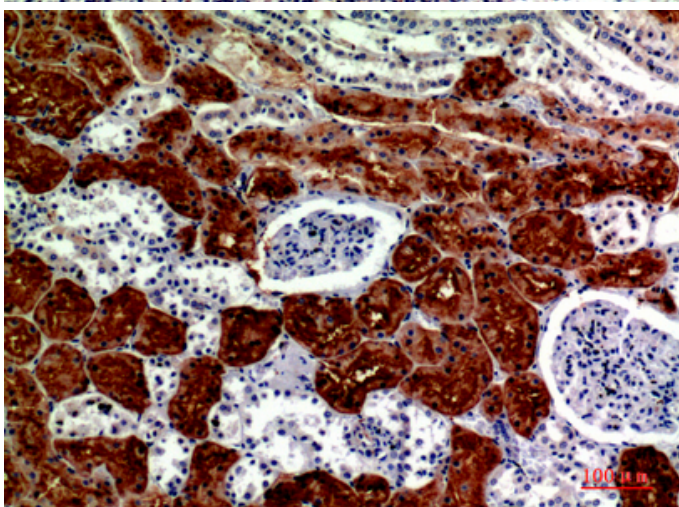
Product Images



Western blot analysis of SH-SY5Y K562 HELA using RNase III Drosha antibody. Antibody was diluted at 1:1000. Secondary antibody was diluted at 1:20000 cells nucleus extracted by Minute TM Cytoplasmic and Nuclear Fractionation kit (SC-003, Inventbiotech, MN, USA).

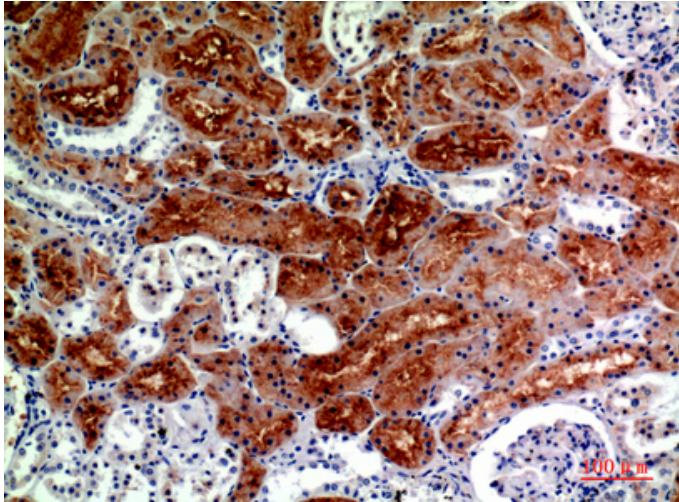


Immunohistochemical analysis of paraffin-embedded human-brain, antibody was diluted at 1:200



Immunohistochemical analysis of paraffin-embedded human-kidney, antibody was diluted at 1:200

Immunohistochemical analysis of paraffin-embedded



human-kidney, antibody was diluted at 1:200