



p38 Polyclonal Antibody

| | |
|-------------------|--|
| Catalog_no : | <u>AT5662</u> |
| Applications : | <u>WB,ELISA</u> |
| Reactivity : | <u>Human,Mouse,Rat,Chicken(testedbyyourcustomer)</u> |
| Category : | <u>抗原抗体</u> |
| Size : | <u>100µg/50µg/20µg</u> |
| Gene_name : | <u>MAPK14</u> |
| Protein_name : | <u>Mitogen-activated protein kinase 14</u> |
| Humangene_id | <u>1432</u> |
| : | <u></u> |
| Humanswissprot | <u>Q16539</u> |
| _no : | <u></u> |
| Mousegene_id : | <u>26416</u> |
| Mouseswissprot | <u>P47811</u> |
| _no : | <u></u> |
| Ratgene_id : | <u></u> |
| Ratswissprot_no | <u>P70618</u> |
| : | <u></u> |
| Immunogen : | <u>Synthesized peptide derived from the C-terminal region of human p38.</u> |
| Specificity : | <u>p38 Polyclonal Antibody detects endogenous levels of p38 protein.</u> |
| Formulation : | <u>Liquid in PBS containing 50% glycerol, 0.5% BSA and 0.02% sodium azide.</u> |
| Source : | <u>Rabbit</u> |
| Dilution : | <u>Western Blot: 1/500 - 1/2000. ELISA: 1/10000. Not yet tested in other applications.</u> |
| Purification : | <u>The antibody was affinity-purified from rabbit antiserum by affinity-chromatography using epitope-specific immunogen.</u> |
| Concentration : | <u>1 mg/ml</u> |
| Storage_stability | <u>-20°C/1 year</u> |
| : | <u></u> |
| Msds : | <u>MSDS_Antibody.pdf</u> |
| Other_name : | <u>MAPK14; CSBP; CSBP1; CSBP2; CSPB1; MXI2; SAPK2A; Mitogen-activated protein kinase</u> |

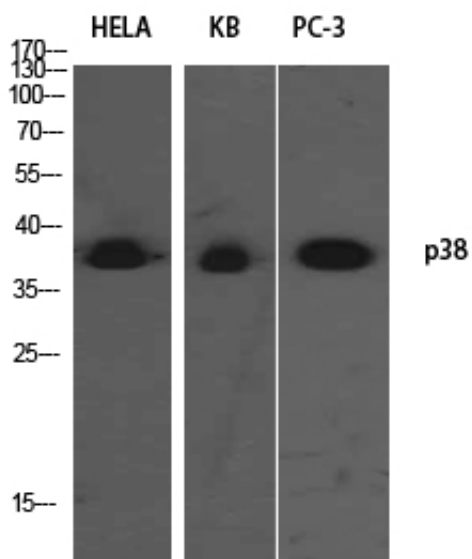


14; MAP kinase 14; MAPK 14; Cytokine suppressive anti-inflammatory drug-binding protein; CSAID-binding protein; CSBP; MAP kinase MXI2; MAX-interacting protein 2; Mitogen-activated protein kinase p38 alpha; MAP kinase p38 alpha; Stress-activated protein kinase 2a; SAPK2a

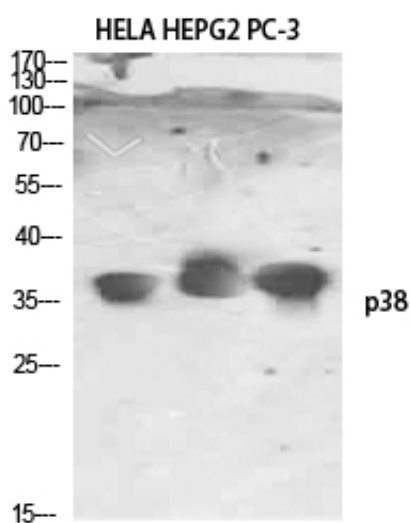
Molecular
Weight :

38KD

Product Images



Western Blot analysis of HELA KB PC-3 using p38 Polyclonal Antibody. Antibody was diluted at 1:1000. Secondary antibody was diluted at 1:20000



Western Blot analysis of HELA HEPG2 PC-3 using p38 Polyclonal Antibody. Antibody was diluted at 1:1000. Secondary antibody was diluted at 1:20000

Western blot analysis of mouse-brain lysis using p38 antibody. Antibody was diluted at 1:1000. Secondary antibody was diluted at 1:20000

