



## Topo IIIα Polyclonal Antibody

Catalog_no :	<u>AT5666</u>
Applications :	<u>WB,ELISA</u>
Reactivity :	<u>Human,Mouse</u>
Category :	<u>抗原抗体</u>
Size :	<u>100μg/50μg/20μg</u>
Gene_name :	<u>TOP3A</u>
Protein_name :	<u>DNA topoisomerase 3-alpha</u>
Humangene_id :	<u><a href="#">7156</a></u>
Humanswissprot_no :	<u><a href="#">Q13472</a></u>
Mousegene_id :	<u><a href="#">21975</a></u>
Mouseswissprot_no :	<u><a href="#">O70157</a></u>
Ratgene_id :	<u></u>
Ratswissprot_no :	<u></u>
Immunogen :	<u>Synthesized peptide derived from Topo IIIα . at AA range: 350-430</u>
Specificity :	<u>Topo IIIα Polyclonal Antibody detects endogenous levels of Topo IIIα protein.</u>
Formulation :	<u>Liquid in PBS containing 50% glycerol, 0.5% BSA and 0.02% sodium azide.</u>
Source :	<u>Rabbit</u>
Dilution :	<u>Western Blot: 1/500 - 1/2000. ELISA: 1/10000. Not yet tested in other applications.</u>
Purification :	<u>The antibody was affinity-purified from rabbit antiserum by affinity-chromatography using epitope-specific immunogen.</u>
Concentration :	<u>1 mg/ml</u>
Storage_stability :	<u>-20°C/1 year</u>
Msds :	<u><a href="#">MSDS_Antibody.pdf</a></u>
Other_name :	<u>TOP3A; TOP3; DNA topoisomerase 3-alpha; DNA topoisomerase III alpha</u>

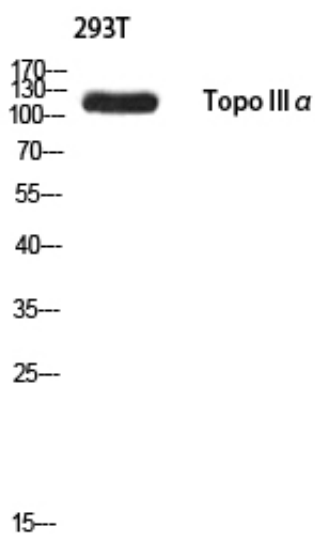


Molecular  
Weight :

115KD

---

## Product Images



Western blot analysis of 293T using Topo III $\alpha$  antibody. Antibody was diluted at 1:500. Secondary antibody was diluted at 1:20000 cells nucleus extracted by Minute TM Cytoplasmic and Nuclear Fractionation kit (SC-003, Inventbiotech, MN, USA).