

MRP-L35 Polyclonal Antibody

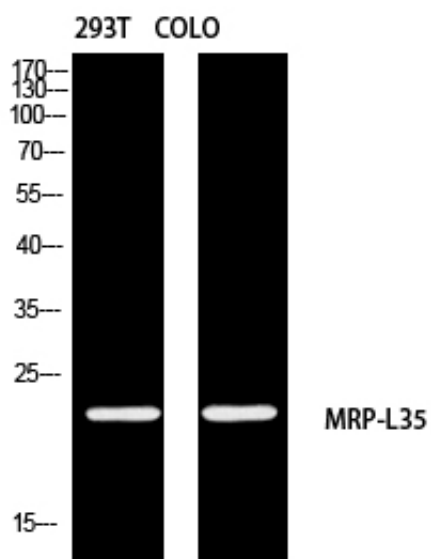
Catalog_no :	AT5669
Applications :	WB,ELISA
Reactivity :	Human,Mouse
Category :	抗原抗体
Size :	100µg/50µg/20µg
Gene_name :	MRPL35
Protein_name :	39S ribosomal protein L35 mitochondrial
Humangene_id :	51318
Humanswissprot_no :	Q9NZE8
Mousegene_id :	66223
Mouseswissprot_no :	Q9CQL6
Ratgene_id :	
Ratswissprot_no :	
Immunogen :	Synthesized peptide derived from MRP-L35 . at AA range: 80-160
Specificity :	MRP-L35 Polyclonal Antibody detects endogenous levels of MRP-L35 protein.
Formulation :	Liquid in PBS containing 50% glycerol, 0.5% BSA and 0.02% sodium azide.
Source :	Rabbit
Dilution :	Western Blot: 1/500 - 1/2000. ELISA: 1/10000. Not yet tested in other applications.
Purification :	The antibody was affinity-purified from rabbit antiserum by affinity-chromatography using epitope-specific immunogen.
Concentration :	1 mg/ml
Storage_stability :	-20°C/1 year
Msds :	MSDS_Antibody.pdf
Other_name :	MRPL35; BM-007; 39S ribosomal protein L35, mitochondrial; L35mt; MRP-L35



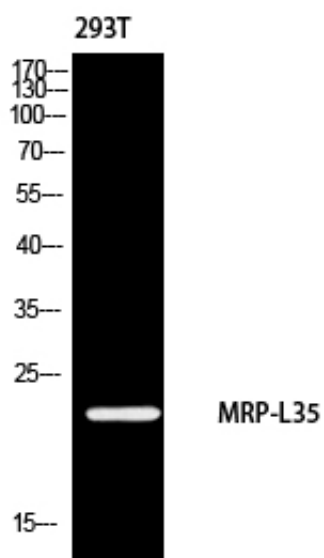
Molecular
Weight :

21KD

Product Images



Western blot analysis of 293T COLO using MRP-L35 antibody. Antibody was diluted at 1:2000. Secondary antibody was diluted at 1:20000



Western blot analysis of 293 using MRP-L35 antibody. Antibody was diluted at 1:2000. Secondary antibody was diluted at 1:20000