

ASAH3 Polyclonal Antibody

Catalog_no :	AT5672
Applications :	WB,ELISA
Reactivity :	Human
Category :	抗原抗体
Size :	100µg/50µg/20µg
Gene_name :	ACER1
Protein_name :	Alkaline ceramidase 1
Humangene_id :	125981
Humanswissprot_no :	Q8TDN7
Mousegene_id :	
Mouseswissprot_no :	Q8R4X1
Ratgene_id :	
Ratswissprot_no :	
Immunogen :	Synthesized peptide derived from ASAH3 . at AA range: 100-180
Specificity :	ASAH3 Polyclonal Antibody detects endogenous levels of ASAH3 protein.
Formulation :	Liquid in PBS containing 50% glycerol, 0.5% BSA and 0.02% sodium azide.
Source :	Rabbit
Dilution :	Western Blot: 1/500 - 1/2000. ELISA: 1/10000. Not yet tested in other applications.
Purification :	The antibody was affinity-purified from rabbit antiserum by affinity-chromatography using epitope-specific immunogen.
Concentration :	1 mg/ml
Storage_stability :	-20°C/1 year
Msds :	MSDS_Antibody.pdf
Other_name :	ACER1; ASAH3; Alkaline ceramidase 1; AlkCDase 1; Alkaline CDase 1; Acylsphingosine

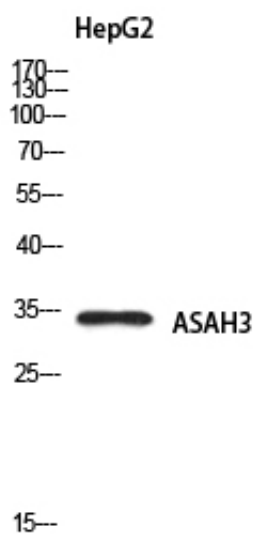


deacylase 3; N-acylsphingosine amidohydrolase 3

Molecular
Weight :

34KD

Product Images



Western blot analysis of HepG2 using ASAH3 antibody..
Secondary antibody was diluted at 1:20000