

## ASAH3L Polyclonal Antibody

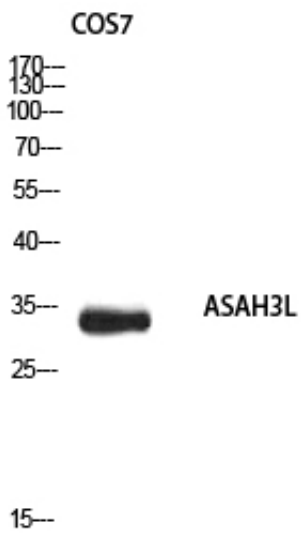
Catalog_no :	AT5673
Applications :	WB,IHC-p,ELISA
Reactivity :	Human,Mouse
Category :	抗原抗体
Size :	100µg/50µg/20µg
Gene_name :	ACER2
Protein_name :	Alkaline ceramidase 2
Humangene_id :	<a href="#">340485</a>
Humanswissprot_no :	<a href="#">Q5QJU3</a>
Mousegene_id :	<a href="#">230379</a>
Mouseswissprot_no :	<a href="#">Q8VD53</a>
Ratgene_id :	
Ratswissprot_no :	
Immunogen :	Synthesized peptide derived from ASAH3L . at AA range: 50-130
Specificity :	ASAH3L Polyclonal Antibody detects endogenous levels of ASAH3L protein.
Formulation :	Liquid in PBS containing 50% glycerol, 0.5% BSA and 0.02% sodium azide.
Source :	Rabbit
Dilution :	Western Blot: 1/500 - 1/2000. IHC-p: 1:100-1:300. ELISA: 1/10000. Not yet tested in other applications.
Purification :	The antibody was affinity-purified from rabbit antiserum by affinity-chromatography using epitope-specific immunogen.
Concentration :	1 mg/ml
Storage_stability :	-20°C/1 year
Msds :	<a href="#">MSDS_Antibody.pdf</a>



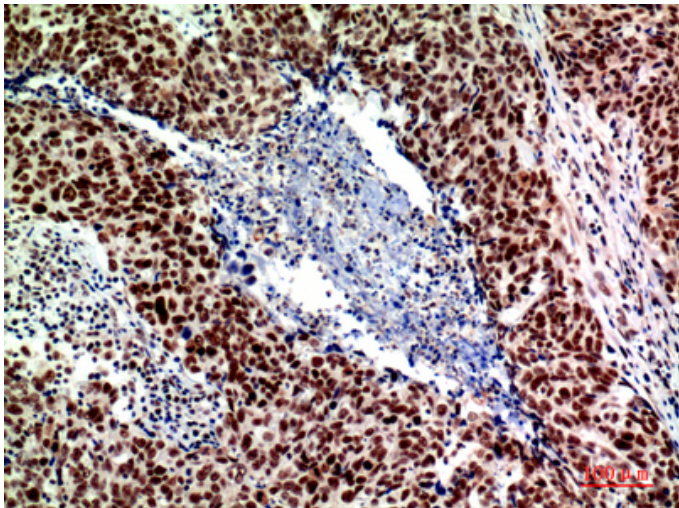
Other\_name : ACER2; ASAH3L; PP11646; Alkaline ceramidase 2; AlkCDase 2; Alkaline CDase 2; haCER2; Acylsphingosine deacylase 3-like; N-acylsphingosine amidohydrolase 3-like

Molecular Weight : 33KD

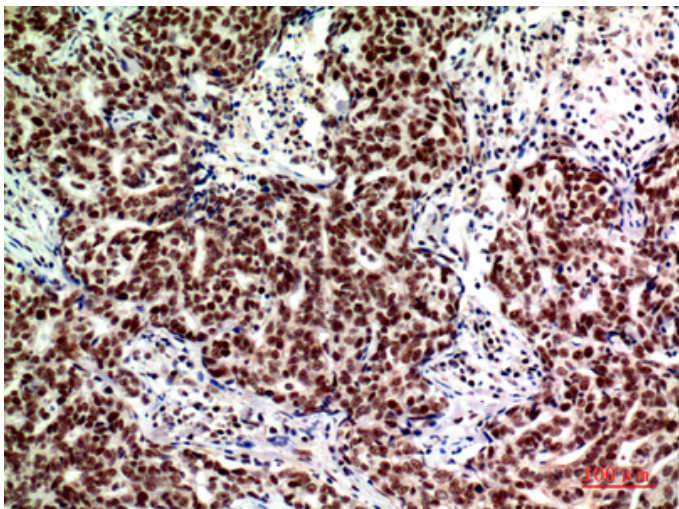
## Product Images



Western blot analysis of COS7 using ASA3L antibody..  
Secondary antibody was diluted at 1:20000

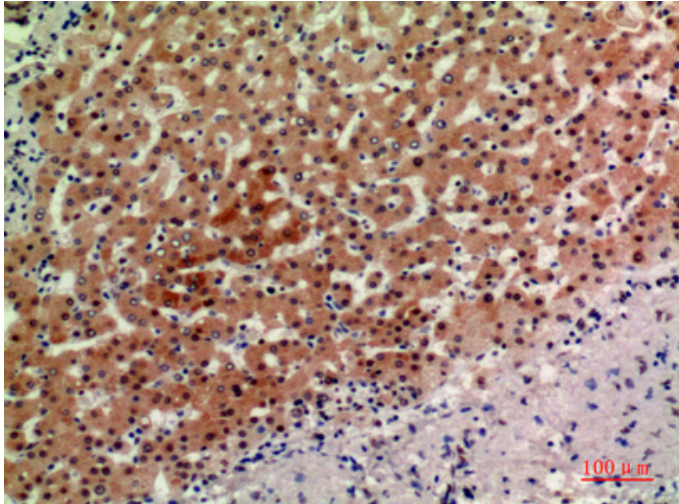


Immunohistochemical analysis of paraffin-embedded  
human-breast-cancer, antibody was diluted at 1:200



Immunohistochemical analysis of paraffin-embedded  
human-breast-cancer, antibody was diluted at 1:200

Immunohistochemical analysis of paraffin-embedded



human-liver, antibody was diluted at 1:200