

APP-BP2 Polyclonal Antibody

Catalog_no :	<u>AT5674</u>
Applications :	<u>WB,ELISA</u>
Reactivity :	<u>Human,Mouse,Rat</u>
Category :	<u>抗原抗体</u>
Size :	<u>100µg/50µg/20µg</u>
Gene_name :	<u>APPBP2</u>
Protein_name :	<u>Amyloid protein-binding protein 2</u>
Humangene_id :	<u>10513</u>
Humanswissprot_no :	<u>Q92624</u>
Mousegene_id :	<u>66884</u>
Mouseswissprot_no :	<u>Q9DAX9</u>
Ratgene_id :	<u>303396</u>
Ratswissprot_no :	<u>A5HK05</u>
Immunogen :	<u>Synthesized peptide derived from APP-BP2 . at AA range: 390-470</u>
Specificity :	<u>APP-BP2 Polyclonal Antibody detects endogenous levels of APP-BP2 protein.</u>
Formulation :	<u>Liquid in PBS containing 50% glycerol, 0.5% BSA and 0.02% sodium azide.</u>
Source :	<u>Rabbit</u>
Dilution :	<u>Western Blot: 1/500 - 1/2000. ELISA: 1/10000. Not yet tested in other applications.</u>
Purification :	<u>The antibody was affinity-purified from rabbit antiserum by affinity-chromatography using epitope-specific immunogen.</u>
Concentration :	<u>1 mg/ml</u>
Storage_stability :	<u>-20°C/1 year</u>
Msds :	<u>MSDS_Antibody.pdf</u>
Other_name :	<u>APPBP2; KIAA0228; PAT1; Amyloid protein-binding protein 2; Amyloid beta precursor</u>

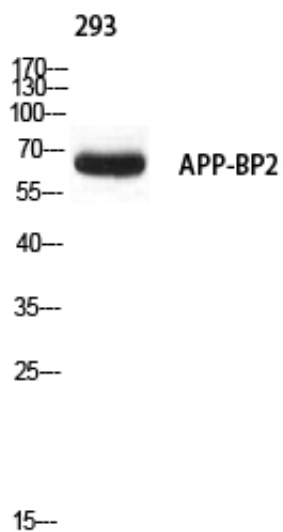


protein-binding protein 2; APP-BP2; Protein interacting with APP tail 1

Molecular
Weight :

67KD

Product Images



Western blot analysis of 293 using APP-BP2 antibody..
Secondary antibody was diluted at 1:20000