

Galactosidase β Polyclonal Antibody

Catalog_no :	AT5675
Applications :	WB,IHC-p,ELISA
Reactivity :	Human
Category :	抗原抗体
Size :	100 μ g/50 μ g/20 μ g
Gene_name :	GLB1
Protein_name :	Beta-galactosidase
Humangene_id :	2720
Humanswissprot_no :	P16278
Mousegene_id :	
Mouseswissprot_no :	P23780
Ratgene_id :	
Ratswissprot_no :	
Immunogen :	Synthesized peptide derived from the Internal region of human Galactosidase β .
Specificity :	Galactosidase β Polyclonal Antibody detects endogenous levels of Galactosidase β protein.
Formulation :	Liquid in PBS containing 50% glycerol, 0.5% BSA and 0.02% sodium azide.
Source :	Rabbit
Dilution :	Western Blot: 1/500 - 1/2000. IHC-p: 1:100-1:300. ELISA: 1/10000. Not yet tested in other applications.
Purification :	The antibody was affinity-purified from rabbit antiserum by affinity-chromatography using epitope-specific immunogen.
Concentration :	1 mg/ml
Storage_stability :	-20°C/1 year
Msds :	MSDS_Antibody.pdf

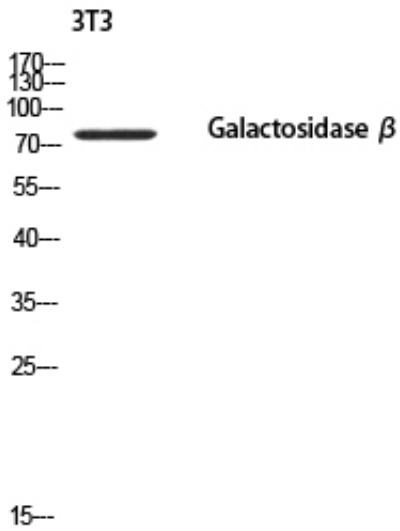


Other_name : GLB1; ELNR1; Beta-galactosidase; Acid beta-galactosidase; Lactase; Elastin receptor 1

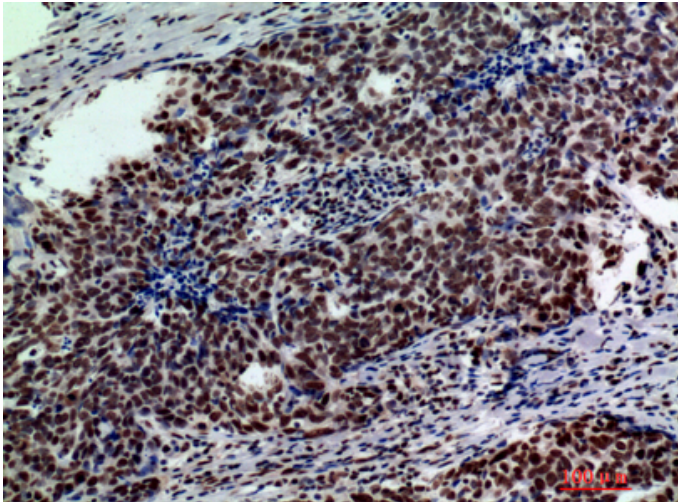
Molecular Weight : 76KD

Weight : _____

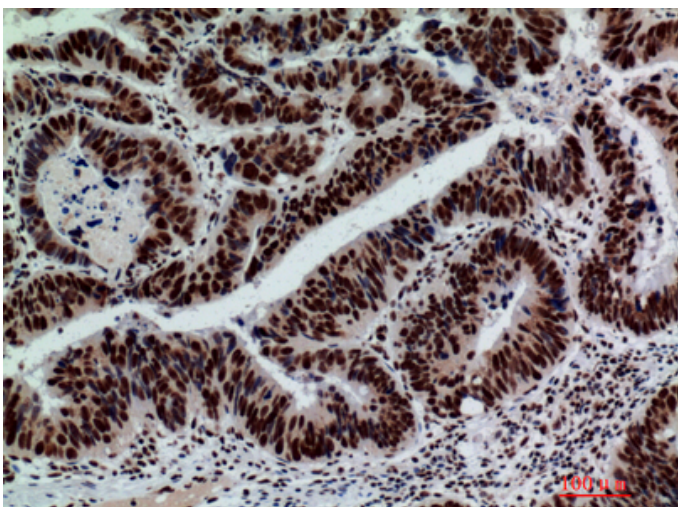
Product Images



Western blot analysis of 3T3 using Galactosidase β antibody.. Secondary antibody was diluted at 1:20000



Immunohistochemical analysis of paraffin-embedded human-breast-cancer, antibody was diluted at 1:200



Immunohistochemical analysis of paraffin-embedded human-colont-cancer, antibody was diluted at 1:200



专注二抗产品

Biodragon旗下品牌
