

## NHERF-2 Polyclonal Antibody

Catalog_no :	<u>AT5676</u>
Applications :	<u>WB,ELISA</u>
Reactivity :	<u>Human,Mouse,Rat</u>
Category :	<u>抗原抗体</u>
Size :	<u>100µg/50µg/20µg</u>
Gene_name :	<u>SLC9A3R2</u>
Protein_name :	<u>Na(+)/H(+) exchange regulatory cofactor NHE-RF2</u>
Humangene_id	<u><a href="#">9351</a></u>
:	
Humanswissprot	<u><a href="#">Q15599</a></u>
_no :	
Mousegene_id :	<u><a href="#">65962</a></u>
Mouseswissprot	<u><a href="#">Q9JHL1</a></u>
_no :	
Ratgene_id :	<u><a href="#">116501</a></u>
Ratswissprot_no	<u><a href="#">Q920G2</a></u>
:	
Immunogen :	<u>Synthesized peptide derived from NHERF-2 . at AA range: 20-100</u>
Specificity :	<u>NHERF-2 Polyclonal Antibody detects endogenous levels of NHERF-2 protein.</u>
Formulation :	<u>Liquid in PBS containing 50% glycerol, 0.5% BSA and 0.02% sodium azide.</u>
Source :	<u>Rabbit</u>
Dilution :	<u>Western Blot: 1/500 - 1/2000. ELISA: 1/10000. Not yet tested in other applications.</u>
Purification :	<u>The antibody was affinity-purified from rabbit antiserum by affinity-chromatography using epitope-specific immunogen.</u>
Concentration :	<u>1 mg/ml</u>
Storage_stability	<u>-20°C/1 year</u>
:	
Msds :	<u>MSDS_Antibody.pdf</u>
Other_name :	<u>SLC9A3R2; NHERF2; Na(+)/H(+) exchange regulatory cofactor NHE-RF2; NHERF-2; NHE3</u>



kinase A regulatory protein E3KARP; SRY-interacting protein 1; SIP-1; Sodium-hydrogen exchanger regulatory factor 2; Solute carrier family 9 isoform A3 regulatory factor 2; Tyrosine kinase activator protein 1; TKA-1

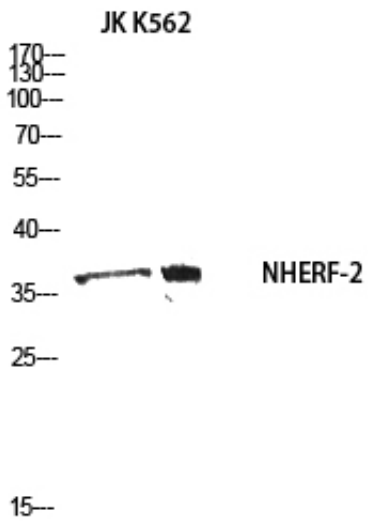
---

Molecular  
Weight :

37KD

---

## Product Images



Western blot analysis of JK K562 using NHERF-2 antibody.. Secondary antibody was diluted at 1:20000