

FAT10 Polyclonal Antibody

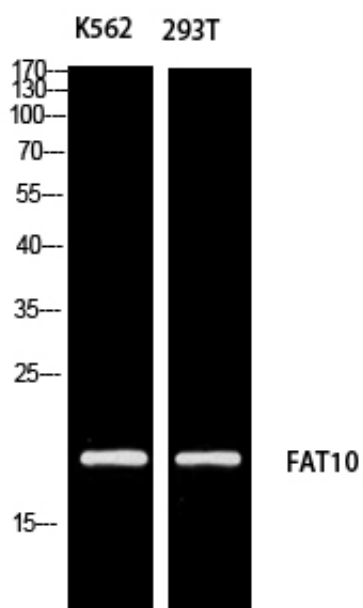
Catalog_no :	AT5678
Applications :	WB,ELISA
Reactivity :	Human
Category :	抗原抗体
Size :	100µg/50µg/20µg
Gene_name :	UBD
Protein_name :	Ubiquitin D
Humangene_id :	10537
Humanswissprot_no :	O15205
Mousegene_id :	
Mouseswissprot_no :	P63072
Ratgene_id :	
Ratswissprot_no :	
Immunogen :	Synthesized peptide derived from the Internal region of human FAT10.
Specificity :	FAT10 Polyclonal Antibody detects endogenous levels of FAT10 protein.
Formulation :	Liquid in PBS containing 50% glycerol, 0.5% BSA and 0.02% sodium azide.
Source :	Rabbit
Dilution :	Western Blot: 1/500 - 1/2000. ELISA: 1/10000. Not yet tested in other applications.
Purification :	The antibody was affinity-purified from rabbit antiserum by affinity-chromatography using epitope-specific immunogen.
Concentration :	1 mg/ml
Storage_stability :	-20°C/1 year
Msds :	MSDS_Antibody.pdf
Other_name :	UBD; FAT10; Ubiquitin D; Diubiquitin; Ubiquitin-like protein FAT10



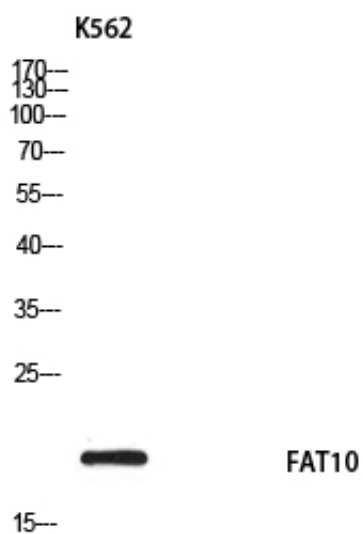
Molecular
Weight :

18KD

Product Images



Western blot analysis of K562 293T using FAT10 antibody. Antibody was diluted at 1:1000. Secondary antibody was diluted at 1:20000



Western blot analysis of K562 using FAT10 antibody. Antibody was diluted at 1:1000. Secondary antibody was diluted at 1:20000