

Otubain-1 Polyclonal Antibody

Catalog_no :	<u>AT5679</u>
Applications :	<u>WB,ELISA</u>
Reactivity :	<u>Human,Mouse,Rat</u>
Category :	<u>抗原抗体</u>
Size :	<u>100µg/50µg/20µg</u>
Gene_name :	<u>OTUB1</u>
Protein_name :	<u>Ubiquitin thioesterase OTUB1</u>
Humangene_id	<u>55611</u>
:	<u></u>
Humanswissprot	<u>Q96FW1</u>
_no :	<u></u>
Mousegene_id :	<u>107260</u>
Mouseswissprot	<u>Q7TQI3</u>
_no :	<u></u>
Ratgene_id :	<u>293705</u>
Ratswissprot_no	<u>B2RYG6</u>
:	<u></u>
Immunogen :	<u>Synthesized peptide derived from Otubain-1 . at AA range: 20-100</u>
Specificity :	<u>Otubain-1 Polyclonal Antibody detects endogenous levels of Otubain-1 protein.</u>
Formulation :	<u>Liquid in PBS containing 50% glycerol, 0.5% BSA and 0.02% sodium azide.</u>
Source :	<u>Rabbit</u>
Dilution :	<u>Western Blot: 1/500 - 1/2000. ELISA: 1/10000. Not yet tested in other applications.</u>
Purification :	<u>The antibody was affinity-purified from rabbit antiserum by affinity-chromatography using epitope-specific immunogen.</u>
Concentration :	<u>1 mg/ml</u>
Storage_stability	<u>-20°C/1 year</u>
:	<u></u>
Msds :	<u>MSDS_Antibody.pdf</u>
Other_name :	<u>OTUB1; OTB1; OTU1; HSPC263; Ubiquitin thioesterase OTUB1; Deubiquitinating enzyme</u>

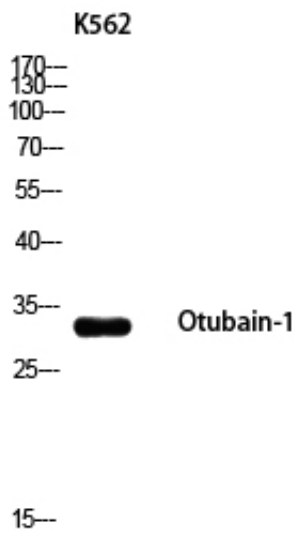


OTUB1; OTU domain-containing ubiquitin aldehyde-binding protein 1; Otubain-1;
hOTU1; Ubiquitin-specific-processing protease OTUB1

Molecular
Weight :

31KD

Product Images



Western blot analysis of K562 using Otubain-1 antibody..
Secondary antibody was diluted at 1:20000