

## SEC22B Polyclonal Antibody

Catalog_no :	<u>AT5680</u>
Applications :	<u>WB,IHC-p,ELISA</u>
Reactivity :	<u>Human,Mouse,Rat</u>
Category :	<u>抗原抗体</u>
Size :	<u>100µg/50µg/20µg</u>
Gene_name :	<u>SEC22B</u>
Protein_name :	<u>Vesicle-trafficking protein SEC22b</u>
Humangene_id	<u><a href="#">9554</a></u>
:	<u></u>
Humanswissprot	<u><a href="#">O75396</a></u>
_no :	<u></u>
Mousegene_id :	<u><a href="#">20333</a></u>
Mouseswissprot	<u><a href="#">O08547</a></u>
_no :	<u></u>
Ratgene_id :	<u><a href="#">310710</a></u>
Ratswissprot_no	<u><a href="#">Q4KM74</a></u>
:	<u></u>
Immunogen :	<u>Synthesized peptide derived from the Internal region of human SEC22B.</u>
Specificity :	<u>SEC22B Polyclonal Antibody detects endogenous levels of SEC22B protein.</u>
Formulation :	<u>Liquid in PBS containing 50% glycerol, 0.5% BSA and 0.02% sodium azide.</u>
Source :	<u>Rabbit</u>
Dilution :	<u>Western Blot: 1/500 - 1/2000. IHC-p: 1:100-1:300. ELISA: 1/10000. Not yet tested in other applications.</u>
Purification :	<u>The antibody was affinity-purified from rabbit antiserum by affinity-chromatography using epitope-specific immunogen.</u>
Concentration :	<u>1 mg/ml</u>
Storage_stability	<u>-20°C/1 year</u>
:	<u></u>
Msds :	<u><a href="#">MSDS_Antibody.pdf</a></u>



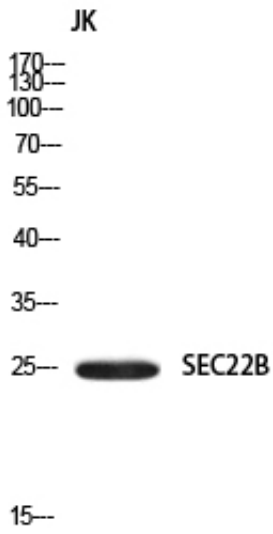
Other\_name : SEC22B; SEC22L1; Vesicle-trafficking protein SEC22b; ER-Golgi SNARE of 24 kDa; ERS-24; ERS24; SEC22 vesicle-trafficking protein homolog B; SEC22 vesicle-trafficking protein-like 1

---

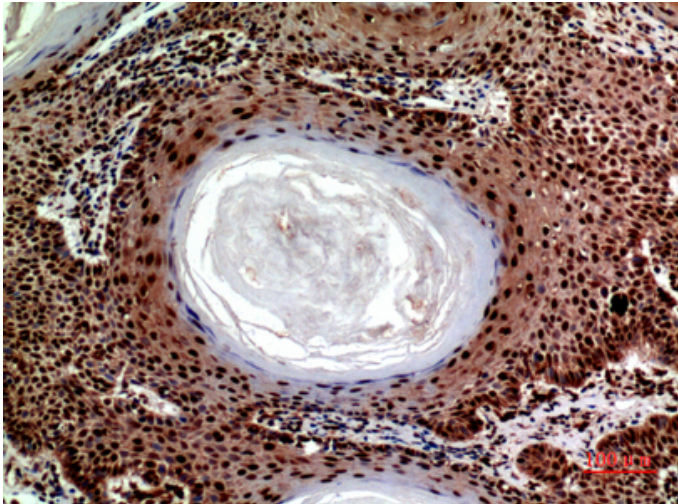
Molecular Weight : 23KD

---

## Product Images



Western blot analysis of JK using SEC22B antibody..  
Secondary antibody was diluted at 1:20000



Immunohistochemical analysis of paraffin-embedded  
human-skin, antibody was diluted at 1:100