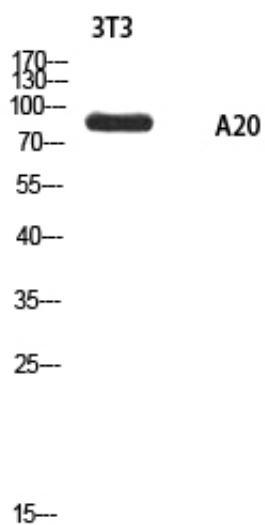




A20 Polyclonal Antibody

Catalog_no :	AT5681
Applications :	WB,ELISA
Reactivity :	Human
Category :	抗原抗体
Size :	100µg/50µg/20µg
Gene_name :	ANKRD20A1
Protein_name :	Ankyrin repeat domain-containing protein 20A1
Humangene_id	84210
:	
Humanswissprot	Q5TYW2
_no :	
Ratgene_id :	
Ratswissprot_no	
:	
Immunogen :	Synthesized peptide derived from the Internal region of human A20.
Specificity :	A20 Polyclonal Antibody detects endogenous levels of A20 protein.
Formulation :	Liquid in PBS containing 50% glycerol, 0.5% BSA and 0.02% sodium azide.
Source :	Rabbit
Dilution :	Western Blot: 1/500 - 1/2000. ELISA: 1/10000. Not yet tested in other applications.
Purification :	The antibody was affinity-purified from rabbit antiserum by affinity-chromatography using epitope-specific immunogen.
Concentration :	1 mg/ml
Storage_stability	-20°C/1 year
:	
Msds :	MSDS_Antibody.pdf
Other_name :	ANKRD20A1; ANKRD20A; Ankyrin repeat domain-containing protein 20A1
Molecular	95KD
Weight :	

Product Images



Western blot analysis of 3T3 using A20 antibody..
Secondary antibody was diluted at 1:20000