

PI 3-Kinase C2 γ Polyclonal Antibody

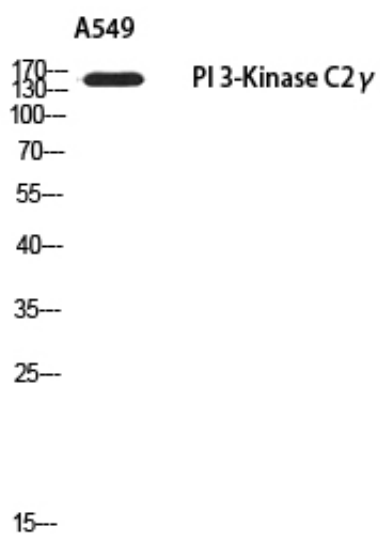
Catalog_no :	AT5683
Applications :	WB,ELISA
Reactivity :	Human
Category :	抗原抗体
Size :	100 μ g/50 μ g/20 μ g
Gene_name :	PIK3C2G
Protein_name :	Phosphatidylinositol 4-phosphate 3-kinase C2 domain-containing subunit gamma
Humangene_id :	5288
Humanswissprot_no :	O75747
Mousegene_id :	
Mouseswissprot_no :	O70167
Ratgene_id :	
Ratswissprot_no :	
Immunogen :	Synthesized peptide derived from the N-terminal region of human PI 3-Kinase C2 γ .
Specificity :	PI 3-Kinase C2 γ Polyclonal Antibody detects endogenous levels of PI 3-Kinase C2 γ protein.
Formulation :	Liquid in PBS containing 50% glycerol, 0.5% BSA and 0.02% sodium azide.
Source :	Rabbit
Dilution :	Western Blot: 1/500 - 1/2000. ELISA: 1/10000. Not yet tested in other applications.
Purification :	The antibody was affinity-purified from rabbit antiserum by affinity-chromatography using epitope-specific immunogen.
Concentration :	1 mg/ml
Storage_stability :	-20°C/1 year
Msds :	MSDS_Antibody.pdf



Other_name : PIK3C2G; Phosphatidylinositol 4-phosphate 3-kinase C2 domain-containing subunit gamma; PI3K-C2-gamma; PtdIns-3-kinase C2 subunit gamma; Phosphoinositide 3-kinase-C2-gamma

Molecular Weight : 160KD

Product Images



Western blot analysis of A549 using PI 3-Kinase C2 γ antibody.. Secondary antibody was diluted at 1:20000