



## Endoglycan Polyclonal Antibody

Catalog_no :	AT5684
Applications :	WB,ELISA
Reactivity :	Human
Category :	抗原抗体
Size :	100µg/50µg/20µg
Gene_name :	PODXL2
Protein_name :	Podocalyxin-like protein 2
Humangene_id :	<a href="#">50512</a>
Humanswissprot_no :	<a href="#">Q9NZ53</a>
Mousegene_id :	
Mouseswissprot_no :	<a href="#">Q8CAE9</a>
Ratgene_id :	
Ratswissprot_no :	
Immunogen :	Synthesized peptide derived from the Internal region of human Endoglycan.
Specificity :	Endoglycan Polyclonal Antibody detects endogenous levels of Endoglycan protein.
Formulation :	Liquid in PBS containing 50% glycerol, 0.5% BSA and 0.02% sodium azide.
Source :	Rabbit
Dilution :	Western Blot: 1/500 - 1/2000. ELISA: 1/10000. Not yet tested in other applications.
Purification :	The antibody was affinity-purified from rabbit antiserum by affinity-chromatography using epitope-specific immunogen.
Concentration :	1 mg/ml
Storage_stability :	-20°C/1 year
Msds :	<a href="#">MSDS_Antibody.pdf</a>
Other_name :	PODXL2; Podocalyxin-like protein 2; Endoglycan

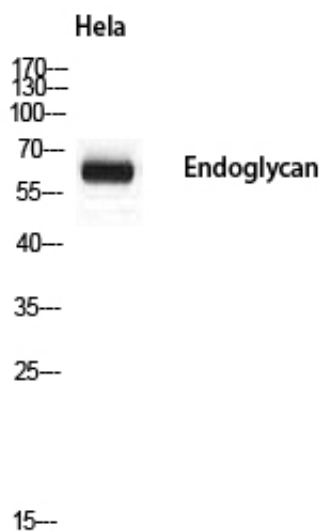


Molecular  
Weight :

65KD

---

## Product Images



Western blot analysis of HeLa using Endoglycan antibody.. Secondary antibody was diluted at 1:20000