

Dectin-2 Polyclonal Antibody

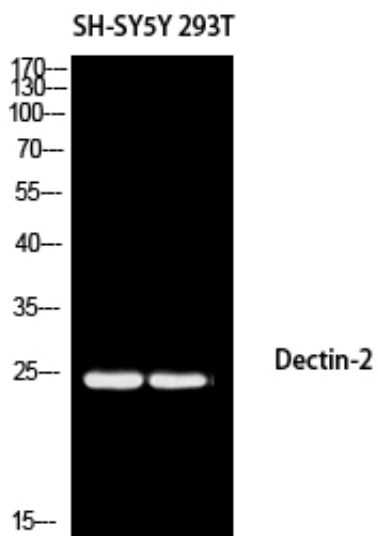
Catalog_no :	AT5685
Applications :	WB,IHC-p,ELISA
Reactivity :	Human
Category :	抗原抗体
Size :	100µg/50µg/20µg
Gene_name :	CLEC6A
Protein_name :	C-type lectin domain family 6 member A
Humangene_id :	93978
Humanswissprot_no :	Q6EIG7
Mousegene_id :	
Mouseswissprot_no :	Q9JKF4
Ratgene_id :	
Ratswissprot_no :	
Immunogen :	Synthesized peptide derived from the Internal region of human Dectin-2.
Specificity :	Dectin-2 Polyclonal Antibody detects endogenous levels of Dectin-2 protein.
Formulation :	Liquid in PBS containing 50% glycerol, 0.5% BSA and 0.02% sodium azide.
Source :	Rabbit
Dilution :	Western Blot: 1/500 - 1/2000. IHC-p: 1:100-1:300. ELISA: 1/10000. Not yet tested in other applications.
Purification :	The antibody was affinity-purified from rabbit antiserum by affinity-chromatography using epitope-specific immunogen.
Concentration :	1 mg/ml
Storage_stability :	-20°C/1 year
Msds :	MSDS_Antibody.pdf



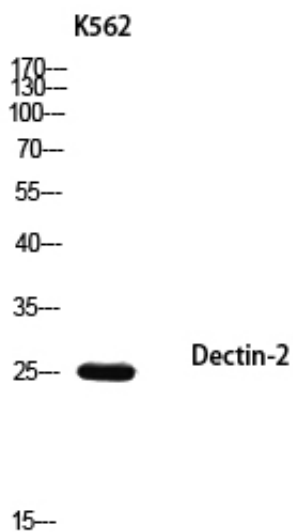
Other_name : CLEC6A; CLECSF10; DECTIN2; C-type lectin domain family 6 member A; C-type lectin superfamily member 10; Dendritic cell-associated C-type lectin 2; DC-associated C-type lectin 2; Dectin-2

Molecular Weight : 23KD

Product Images



Western blot analysis of SH-SY5Y 293T using Dectin-2 antibody. Antibody was diluted at 1:1000. Secondary antibody was diluted at 1:20000



Western blot analysis of K562 using Dectin-2 antibody. Antibody was diluted at 1:1000. Secondary antibody was diluted at 1:20000

Immunohistochemical analysis of paraffin-embedded human-heart, antibody was diluted at 1:200

