



CD156c Polyclonal Antibody

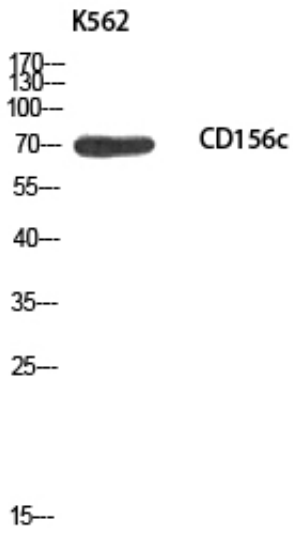
Catalog_no :	<u>AT5686</u>
Applications :	<u>WB,IHC-p,ELISA</u>
Reactivity :	<u>Human,Mouse,Rat</u>
Category :	<u>抗原抗体</u>
Size :	<u>100µg/50µg/20µg</u>
Gene_name :	<u>ADAM10</u>
Protein_name :	<u>Disintegrin and metalloproteinase domain-containing protein 10</u>
Humangene_id	<u>102</u>
:	<u></u>
Humanswissprot	<u>O14672</u>
_no :	<u></u>
Mousegene_id :	<u>11487</u>
Mouseswissprot	<u>O35598</u>
_no :	<u></u>
Ratgene_id :	<u></u>
Ratswissprot_no	<u>Q10743</u>
:	<u></u>
Immunogen :	<u>Synthesized peptide derived from the Internal region of human CD156c.</u>
Specificity :	<u>CD156c Polyclonal Antibody detects endogenous levels of CD156c protein.</u>
Formulation :	<u>Liquid in PBS containing 50% glycerol, 0.5% BSA and 0.02% sodium azide.</u>
Source :	<u>Rabbit</u>
Dilution :	<u>Western Blot: 1/500 - 1/2000. IHC-p: 1:100-1:300. ELISA: 1/10000. Not yet tested in other applications.</u>
Purification :	<u>The antibody was affinity-purified from rabbit antiserum by affinity-chromatography using epitope-specific immunogen.</u>
Concentration :	<u>1 mg/ml</u>
Storage_stability	<u>-20°C/1 year</u>
:	<u></u>
Msds :	<u>MSDS_Antibody.pdf</u>



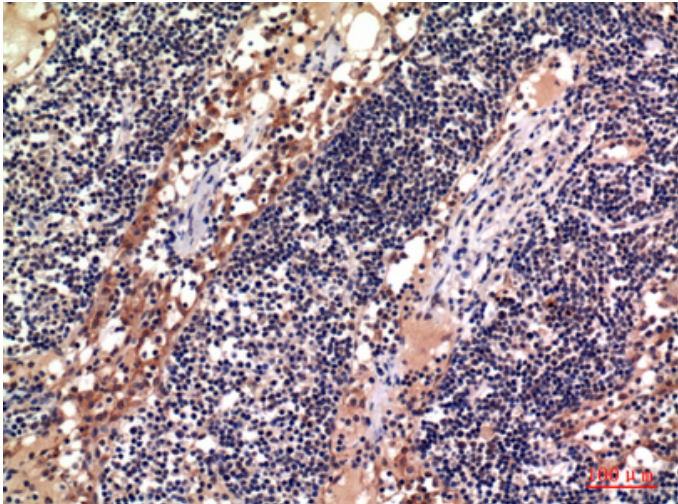
Other_name : ADAM10; KUZ; MADM; Disintegrin and metalloproteinase domain-containing protein 10; ADAM 10; CDw156; Kuzbanian protein homolog; Mammalian disintegrin-metalloprotease; CD156c

Molecular Weight : 70KD

Product Images



Western blot analysis of K562 using CD156c antibody..
Secondary antibody was diluted at 1:20000



Immunohistochemical analysis of paraffin-embedded
human-lymph, antibody was diluted at 1:100