

CD269 Polyclonal Antibody

Catalog_no :	AT5687
Applications :	WB,ELISA
Reactivity :	Human
Category :	抗原抗体
Size :	100µg/50µg/20µg
Gene_name :	TNFRSF17
Protein_name :	Tumor necrosis factor receptor superfamily member 17
Humangene_id	608
:	
Humanswissprot	Q02223
_no :	
Mousegene_id :	
Mouseswissprot	O88472
_no :	
Ratgene_id :	
Ratswissprot_no	
:	
Immunogen :	Synthesized peptide derived from the Internal region of human CD269.
Specificity :	CD269 Polyclonal Antibody detects endogenous levels of CD269 protein.
Formulation :	Liquid in PBS containing 50% glycerol, 0.5% BSA and 0.02% sodium azide.
Source :	Rabbit
Dilution :	Western Blot: 1/500 - 1/2000. ELISA: 1/10000. Not yet tested in other applications.
Purification :	The antibody was affinity-purified from rabbit antiserum by affinity-chromatography using epitope-specific immunogen.
Concentration :	1 mg/ml
Storage_stability	-20°C/1 year
:	
Msds :	MSDS_Antibody.pdf
Other_name :	TNFRSF17; BCM; BCMA; Tumor necrosis factor receptor superfamily member 17; B-cell

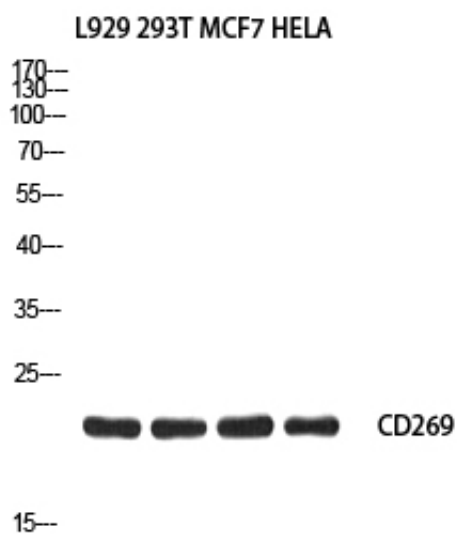


maturation protein; CD269

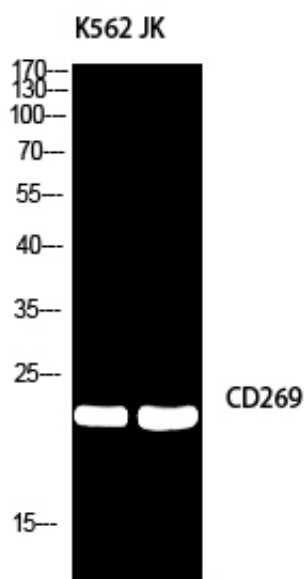
Molecular
Weight :

20KD

Product Images



Western blot analysis of L929 293T MCF7 HELA using CD269 antibody. Antibody was diluted at 1:2000. Secondary antibody was diluted at 1:20000



Western blot analysis of K562/JK using CD269 antibody. Antibody was diluted at 1:2000. Secondary antibody was diluted at 1:20000