



Cleaved-Caspase-8 p18 (S217) Polyclonal Antibody

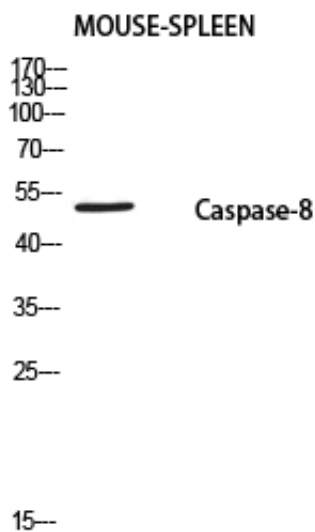
Catalog_no :	AT5688
Applications :	WB,ELISA
Reactivity :	Human
Category :	抗原抗体
Size :	100µg/50µg/20µg
Gene_name :	CASP8
Protein_name :	Caspase-8
Humangene_id :	841
Humanswissprot_no :	Q14790
Mousegene_id :	
Mouseswissprot_no :	O89110
Ratgene_id :	
Ratswissprot_no :	
Immunogen :	Synthesized peptide derived from Cleaved-Caspase-8 p18 (S217) . at AA range: 170-250
Specificity :	Cleaved-Caspase-8 p18 (S217) Polyclonal Antibody detects endogenous levels of Cleaved-Caspase-8 p18 (S217) protein.
Formulation :	Liquid in PBS containing 50% glycerol, 0.5% BSA and 0.02% sodium azide.
Source :	Rabbit
Dilution :	Western Blot: 1/500 - 1/2000. ELISA: 1/10000. Not yet tested in other applications.
Purification :	The antibody was affinity-purified from rabbit antiserum by affinity-chromatography using epitope-specific immunogen.
Concentration :	1 mg/ml
Storage_stability :	-20°C/1 year
Msds :	MSDS_Antibody.pdf



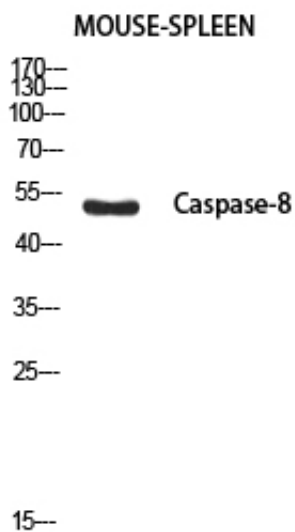
Other_name : CASP8; MCH5; Caspase-8; CASP-8; Apoptotic cysteine protease; Apoptotic protease Mch-5; CAP4; FADD-homologous ICE/ced-3-like protease; FADD-like ICE; FLICE; ICE-like apoptotic protease 5; MORT1-associated ced-3 homolog; MACH

Molecular Weight : 54KD

Product Images



Western blot analysis of MOUSE-SPLEEN using Caspase-8 P18 antibody. Antibody was diluted at 1:1000. Secondary antibody was diluted at 1:20000



Western blot analysis of MOUSE-SPLEEN using Cleaved-Caspase-8 p18 (S217) antibody. Antibody was diluted at 1:1000. Secondary antibody was diluted at 1:20000