

Karyopherin α 2 Polyclonal Antibody

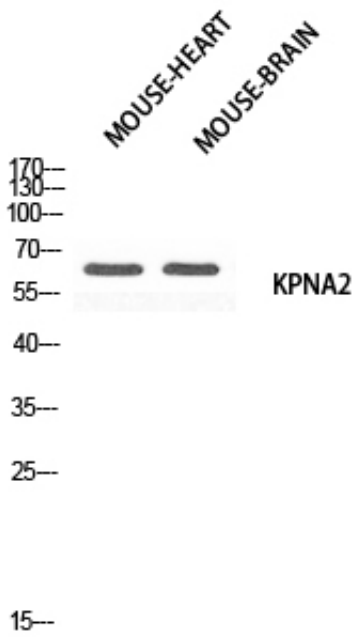
Catalog_no :	AT5691
Applications :	WB,IHC-p,ELISA
Reactivity :	Human,Mouse,Rat
Category :	抗原抗体
Size :	100 μ g/50 μ g/20 μ g
Gene_name :	KPNA2
Protein_name :	Importin subunit alpha-2
Humangene_id :	3838
Humanswissprot_no :	P52292
Mousegene_id :	16647
Mouseswissprot_no :	P52293
Ratgene_id :	
Ratswissprot_no :	
Immunogen :	Synthesized peptide derived from the N-terminal region of human Karyopherin α 2.
Specificity :	Karyopherin α 2 Polyclonal Antibody detects endogenous levels of Karyopherin α 2 protein.
Formulation :	Liquid in PBS containing 50% glycerol, 0.5% BSA and 0.02% sodium azide.
Source :	Rabbit
Dilution :	IHC-p: 100-300.Western Blot: 1/500 - 1/2000. ELISA: 1/10000. Not yet tested in other applications.
Purification :	The antibody was affinity-purified from rabbit antiserum by affinity-chromatography using epitope-specific immunogen.
Concentration :	1 mg/ml
Storage_stability :	-20°C/1 year
Msds :	MSDS_Antibody.pdf



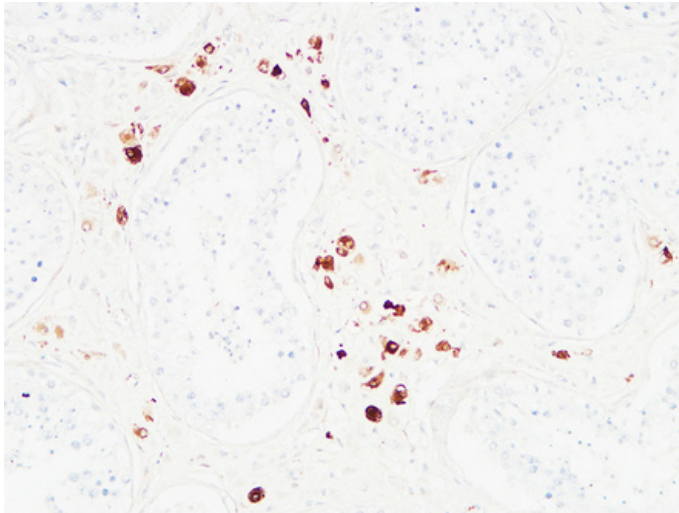
Other_name : KPNA2; RCH1; SRP1; Importin subunit alpha-2; Karyopherin subunit alpha-2; RAG cohort protein 1; SRP1-alpha

Molecular Weight : 60KD

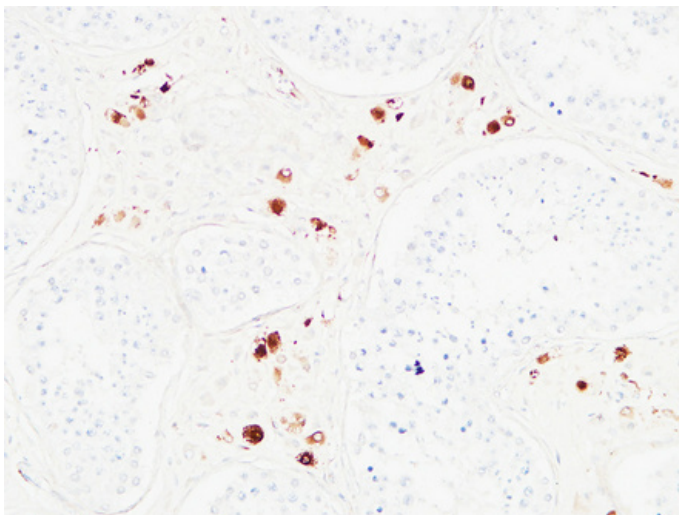
Product Images



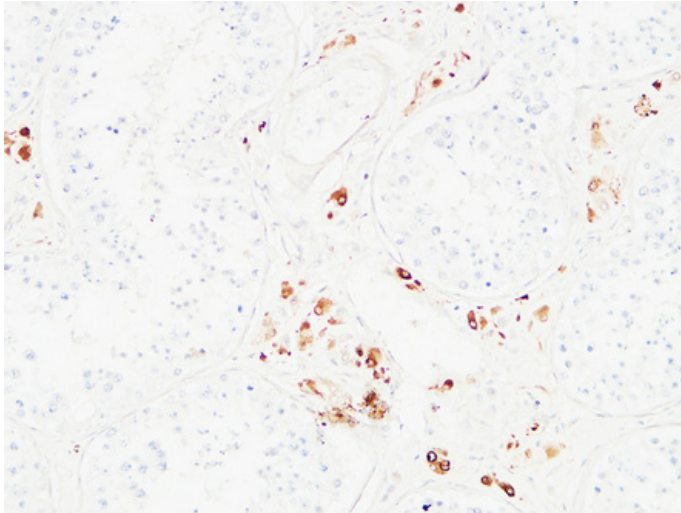
Western blot analysis of MOUSE-HEART MOUSE-BRAIN using KPNA2 antibody. Antibody was diluted at 1:500. Secondary antibody was diluted at 1:20000



Immunohistochemical analysis of paraffin-embedded Human testis. 1, Antibody was diluted at 1:200(4°, overnight). 2, High-pressure and temperature EDTA, pH8.0 was used for antigen retrieval. 3, Secondary antibody was diluted at 1:200(room temperature, 30min).



Immunohistochemical analysis of paraffin-embedded Human testis. 1, Antibody was diluted at 1:200(4°, overnight). 2, High-pressure and temperature EDTA, pH8.0 was used for antigen retrieval. 3, Secondary antibody was diluted at 1:200(room temperature, 30min).



Immunohistochemical analysis of paraffin-embedded Human testis. 1, Antibody was diluted at 1:200(4°, overnight). 2, High-pressure and temperature EDTA, pH8.0 was used for antigen retrieval. 3, Secondary antibody was diluted at 1:200(room temperature, 30min).