

EDA Polyclonal Antibody

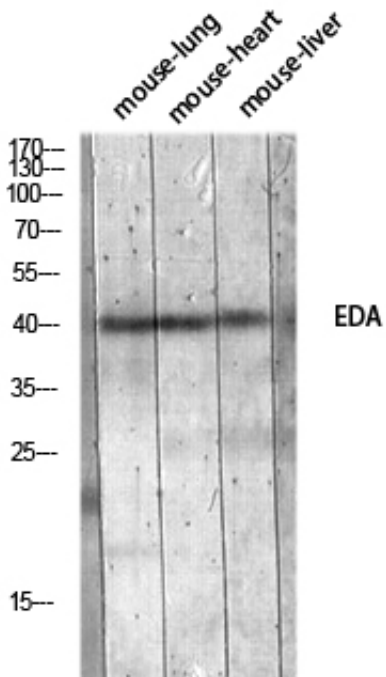
Catalog_no :	AT5703
Applications :	WB,IHC-p,ELISA
Reactivity :	Human,Mouse
Category :	抗原抗体
Size :	100µg/50µg/20µg
Gene_name :	EDA
Protein_name :	Ectodysplasin-A
Humangene_id :	1896
Humanswissprot_no :	Q92838
Mousegene_id :	13607
Mouseswissprot_no :	O54693
Ratgene_id :	
Ratswissprot_no :	
Immunogen :	The antiserum was produced against synthesized peptide derived from the Internal region of human EDA. AA range:120-170
Specificity :	EDA Polyclonal Antibody detects endogenous levels of EDA protein.
Formulation :	Liquid in PBS containing 50% glycerol, 0.5% BSA and 0.02% sodium azide.
Source :	Rabbit
Dilution :	Western Blot: 1/500 - 1/2000. IHC-p: 1:100-1:300. ELISA: 1/10000. Not yet tested in other applications.
Purification :	The antibody was affinity-purified from rabbit antiserum by affinity-chromatography using epitope-specific immunogen.
Concentration :	1 mg/ml
Storage_stability :	-20°C/1 year
Msds :	MSDS_Antibody.pdf



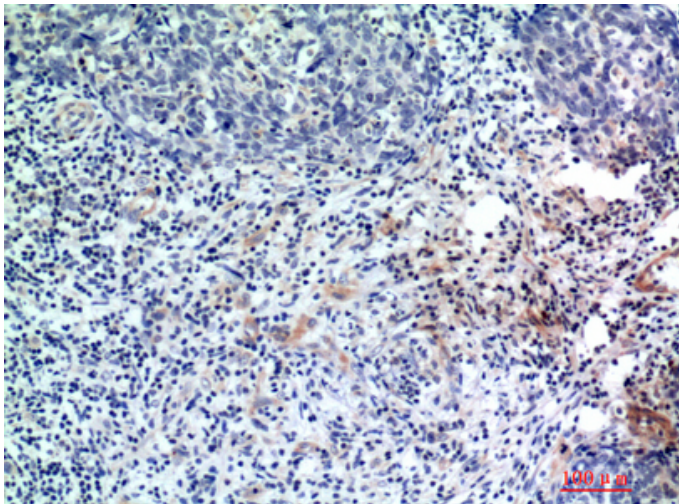
Other_name : EDA; ED1; EDA2; Ectodysplasin-A; Ectodermal dysplasia protein; EDA protein

Molecular Weight : 42KD

Product Images



Western blot analysis of mouse-lung mouse-heart mouse-liver lysis using EDA antibody. Antibody was diluted at 1:1000. Secondary antibody was diluted at 1:20000



Immunohistochemical analysis of paraffin-embedded human-breast-cancer, antibody was diluted at 1:200