



Vitronectin Polyclonal Antibody

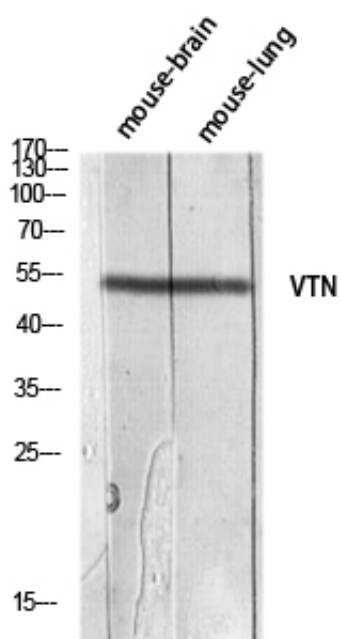
Catalog_no :	AT5706
Applications :	WB,ELISA
Reactivity :	Human
Category :	抗原抗体
Size :	100µg/50µg/20µg
Gene_name :	VTN
Protein_name :	Vitronectin
Humangene_id :	7448
Humanswissprot_no :	P04004
Mousegene_id :	
Mouseswissprot_no :	P29788
Ratgene_id :	
Ratswissprot_no :	
Immunogen :	The antiserum was produced against synthesized peptide derived from the Internal region of human VTN. AA range:50-100
Specificity :	Vitronectin Polyclonal Antibody detects endogenous levels of Vitronectin protein.
Formulation :	Liquid in PBS containing 50% glycerol, 0.5% BSA and 0.02% sodium azide.
Source :	Rabbit
Dilution :	Western Blot: 1/500 - 1/2000. ELISA: 1/10000. Not yet tested in other applications.
Purification :	The antibody was affinity-purified from rabbit antiserum by affinity-chromatography using epitope-specific immunogen.
Concentration :	1 mg/ml
Storage_stability :	-20°C/1 year
Msds :	MSDS_Antibody.pdf



Other_name : VTN; Vitronectin; VN; S-protein; Serum-spreading factor; V75

Molecular Weight : 52KD

Product Images



Western blot analysis of mouse-brain mouse-lung lysis using VTN antibody. Antibody was diluted at 1:1000. Secondary antibody was diluted at 1:20000