

CD56 Polyclonal Antibody

Catalog_no :	AT5708
Applications :	WB,IHC-p,ELISA
Reactivity :	Human
Category :	抗原抗体
Size :	100µg/50µg/20µg
Gene_name :	NCAM1
Protein_name :	Neural cell adhesion molecule 1
Humangene_id :	4684
Humanswissprot_no :	P13591
Mousegene_id :	
Mouseswissprot_no :	P13595
Ratgene_id :	
Ratswissprot_no :	
Immunogen :	The antiserum was produced against synthesized peptide derived from the Internal region of human NCAM1. AA range:250-300
Specificity :	CD56 Polyclonal Antibody detects endogenous levels of CD56 protein.
Formulation :	Liquid in PBS containing 50% glycerol, 0.5% BSA and 0.02% sodium azide.
Source :	Rabbit
Dilution :	Western Blot: 1/500 - 1/2000. IHC-p: 1:100-1:300. ELISA: 1/10000. Not yet tested in other applications.
Purification :	The antibody was affinity-purified from rabbit antiserum by affinity-chromatography using epitope-specific immunogen.
Concentration :	1 mg/ml
Storage_stability :	-20°C/1 year
Msds :	MSDS_Antibody.pdf

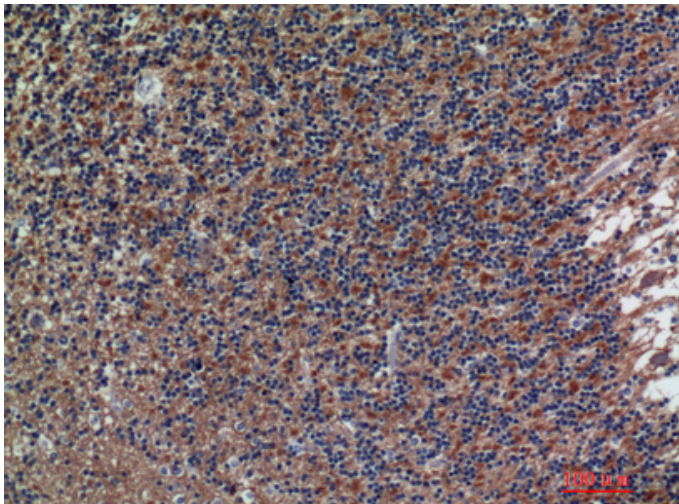
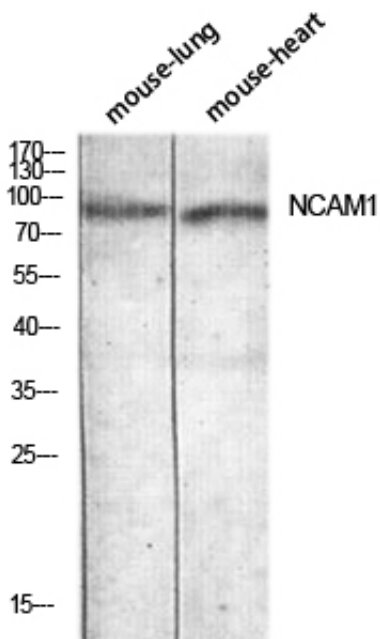


Other_name : NCAM1; NCAM; Neural cell adhesion molecule 1; N-CAM-1; NCAM-1; CD56

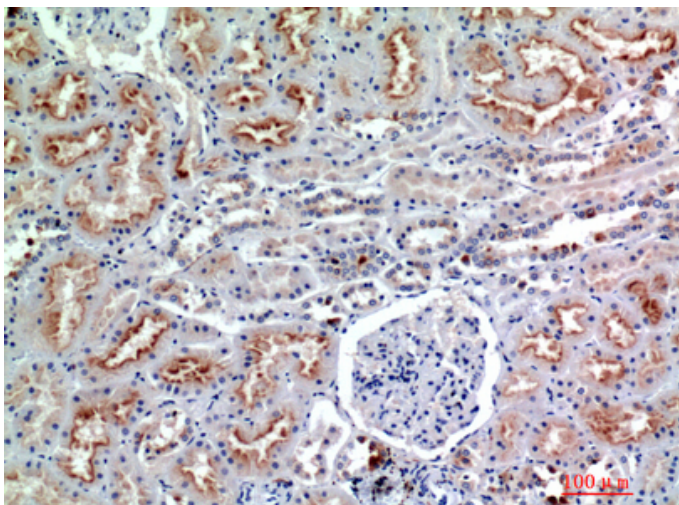
Molecular Weight : 94KD

Product Images

Western blot analysis of mouse-lung mouse-heart lysis using NCAM1 antibody. Antibody was diluted at 1:1000. Secondary antibody was diluted at 1:20000

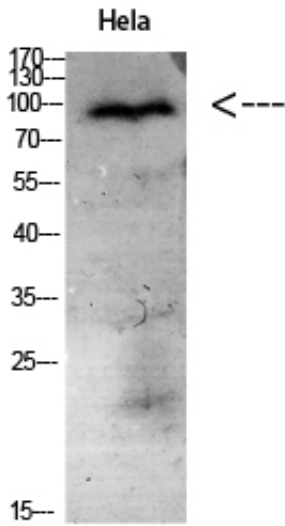


Immunohistochemical analysis of paraffin-embedded human-brain, antibody was diluted at 1:200



Immunohistochemical analysis of paraffin-embedded human-kidney, antibody was diluted at 1:200

Western Blot analysis of Hela cells using Antibody



diluted at 1:1000. Secondary antibody was diluted at 1:20000