

## CD72 Polyclonal Antibody

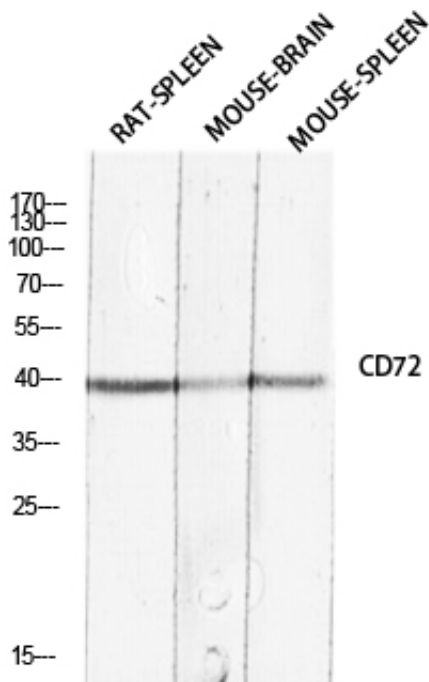
Catalog_no :	AT5709
Applications :	WB,IHC-p,ELISA
Reactivity :	Human
Category :	抗原抗体
Size :	100µg/50µg/20µg
Gene_name :	CD72
Protein_name :	B-cell differentiation antigen CD72
Humangene_id	<a href="#">971</a>
:	
Humanswissprot	<a href="#">P21854</a>
_no :	
Mousegene_id :	
Mouseswissprot	<a href="#">P21855</a>
_no :	
Ratgene_id :	
Ratswissprot_no	
:	
Immunogen :	The antiserum was produced against synthesized peptide derived from the Internal region of human CD72. AA range:170-220
Specificity :	CD72 Polyclonal Antibody detects endogenous levels of CD72 protein.
Formulation :	Liquid in PBS containing 50% glycerol, 0.5% BSA and 0.02% sodium azide.
Source :	Rabbit
Dilution :	IHC-p: 100-300.Western Blot: 1/500 - 1/2000. ELISA: 1/10000. Not yet tested in other applications.
Purification :	The antibody was affinity-purified from rabbit antiserum by affinity-chromatography using epitope-specific immunogen.
Concentration :	1 mg/ml
Storage_stability	-20°C/1 year
:	
Msds :	MSDS_Antibody.pdf



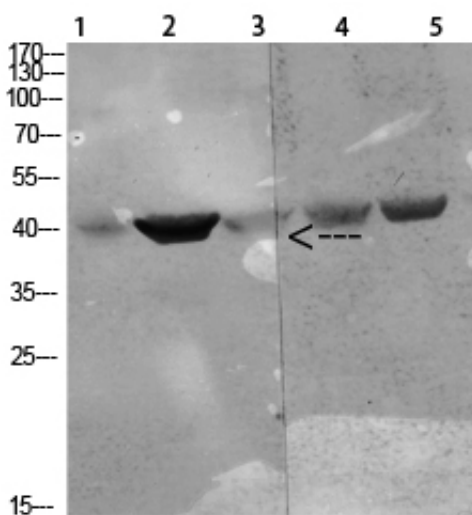
Other\_name : CD72; B-cell differentiation antigen CD72; Lyb-2; CD72

Molecular Weight : 40KD

## Product Images



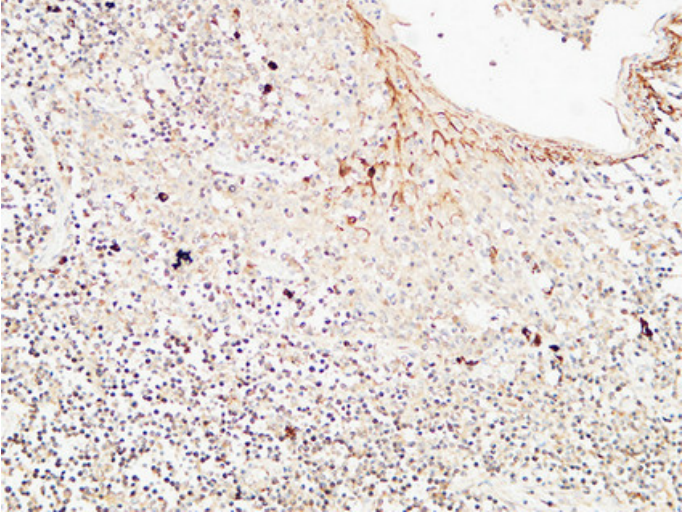
Western blot analysis of RAT-SPLEEN, MOUSE-BRAIN, MOUSE-SPLEEN lysates using CD72 antibody. Antibody was diluted at 1:2000. Secondary antibody was diluted at 1:20000.



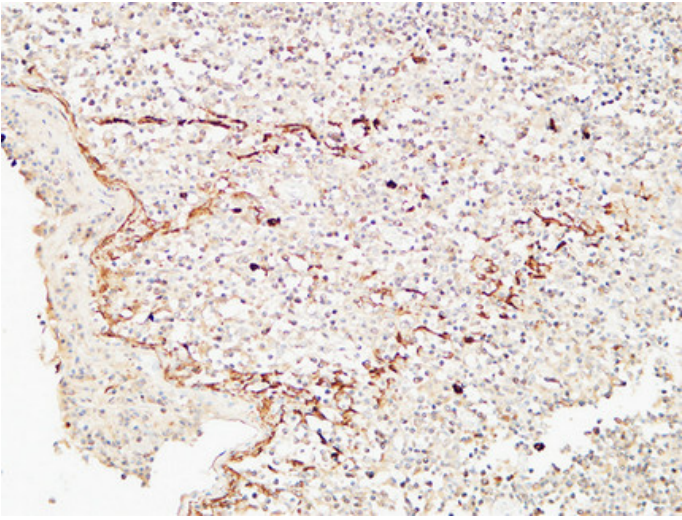
Western blot analysis of various cells using antibody diluted at 1:1000. Secondary antibody was diluted at 1:20000.

- 1 mouse-spleen
- 2 mouse-kidney
- 3 mouse-heart
- 4 293T
- 5 HeLa

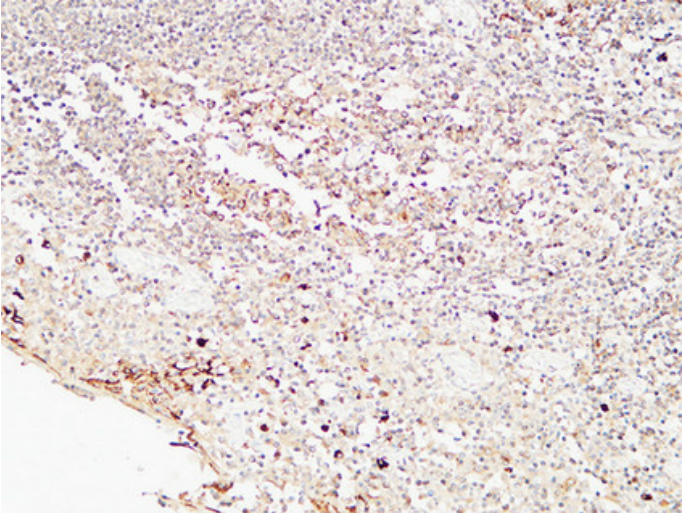
Immunohistochemical analysis of paraffin-embedded Human Amygdala. 1, Antibody was diluted at 1:100 (4°C, overnight). 2, High-pressure and temperature EDTA, pH 8.0 was used for antigen retrieval. 3, Secondary antibody was diluted at 1:200 (room temperature, 30 min).



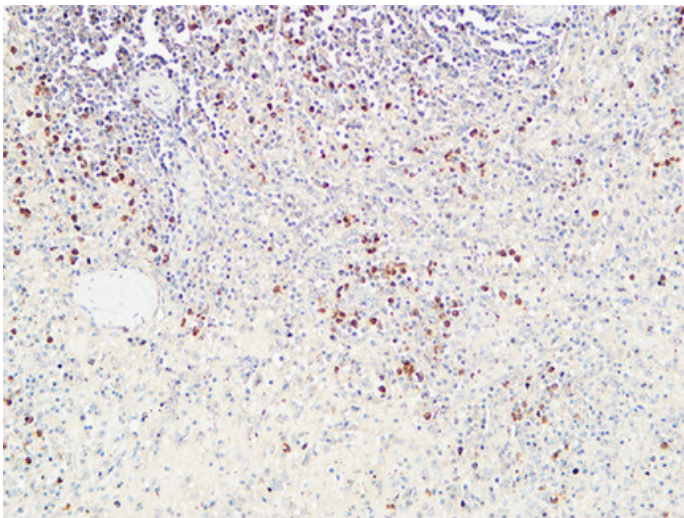
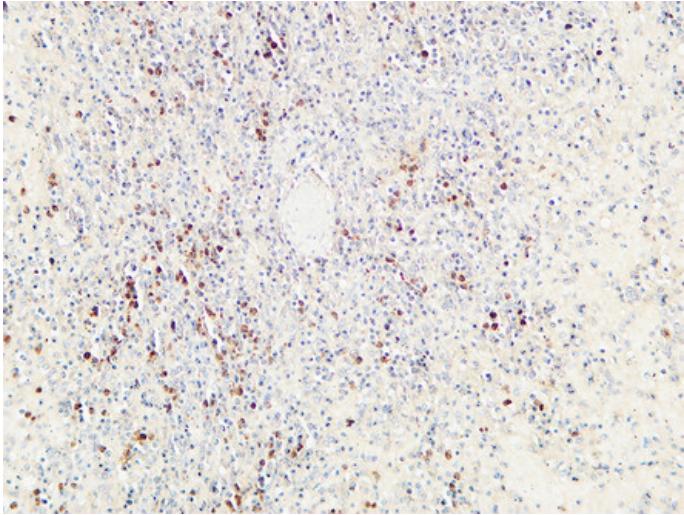
Immunohistochemical analysis of paraffin-embedded Human Amygdala. 1, Antibody was diluted at 1:100(4°,overnight). 2, High-pressure and temperature EDTA, pH8.0 was used for antigen retrieval. 3,Secondary antibody was diluted at 1:200(room temperature, 30min).



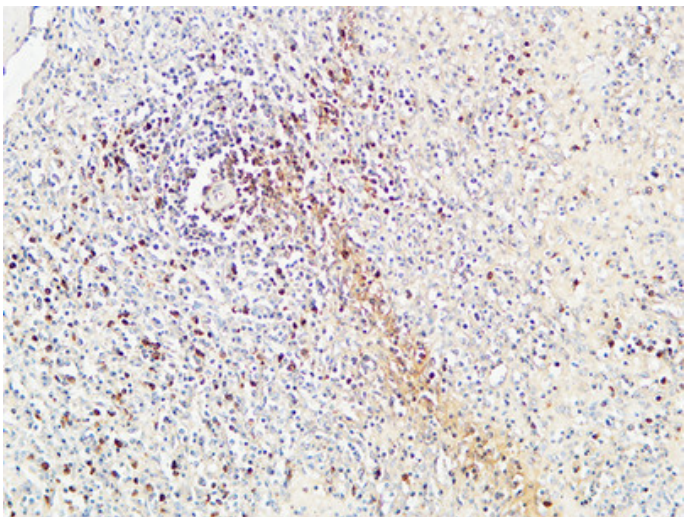
Immunohistochemical analysis of paraffin-embedded Human Amygdala. 1, Antibody was diluted at 1:100(4°,overnight). 2, High-pressure and temperature EDTA, pH8.0 was used for antigen retrieval. 3,Secondary antibody was diluted at 1:200(room temperature, 30min).



Immunohistochemical analysis of paraffin-embedded Human spleen. 1, Antibody was diluted at 1:100(4°,overnight). 2, High-pressure and temperature EDTA, pH8.0 was used for antigen retrieval. 3,Secondary antibody was diluted at 1:200(room temperature, 30min).



Immunohistochemical analysis of paraffin-embedded Human spleen. 1, Antibody was diluted at 1:100(4°,overnight). 2, High-pressure and temperature EDTA, pH8.0 was used for antigen retrieval. 3,Secondary antibody was diluted at 1:200(room temperature, 30min).



Immunohistochemical analysis of paraffin-embedded Human spleen. 1, Antibody was diluted at 1:100(4°,overnight). 2, High-pressure and temperature EDTA, pH8.0 was used for antigen retrieval. 3,Secondary antibody was diluted at 1:200(room temperature, 30min).