

## CD88 Polyclonal Antibody

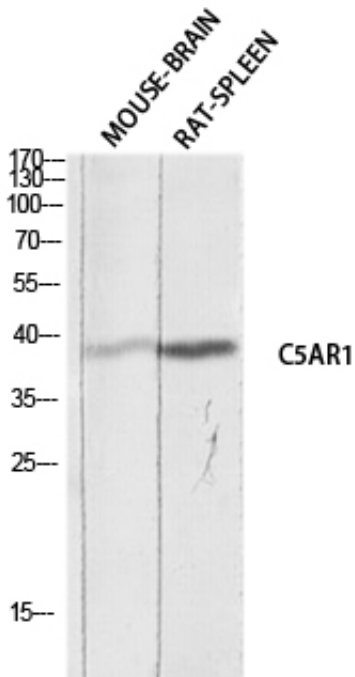
Catalog_no :	AT5710
Applications :	WB,ELISA
Reactivity :	Human
Category :	抗原抗体
Size :	100µg/50µg/20µg
Gene_name :	C5AR1
Protein_name :	C5a anaphylatoxin chemotactic receptor
Humangene_id :	<a href="#">58503</a>
Humanswissprot_no :	<a href="#">P21730</a>
Mousegene_id :	
Mouseswissprot_no :	<a href="#">P30993</a>
Ratgene_id :	
Ratswissprot_no :	
Immunogen :	The antiserum was produced against synthesized peptide derived from the N-terminal region of human C5AR1. AA range:1-50
Specificity :	CD88 Polyclonal Antibody detects endogenous levels of CD88 protein.
Formulation :	Liquid in PBS containing 50% glycerol, 0.5% BSA and 0.02% sodium azide.
Source :	Rabbit
Dilution :	Western Blot: 1/500 - 1/2000. ELISA: 1/10000. Not yet tested in other applications.
Purification :	The antibody was affinity-purified from rabbit antiserum by affinity-chromatography using epitope-specific immunogen.
Concentration :	1 mg/ml
Storage_stability :	-20°C/1 year
Msds :	<a href="#">MSDS_Antibody.pdf</a>



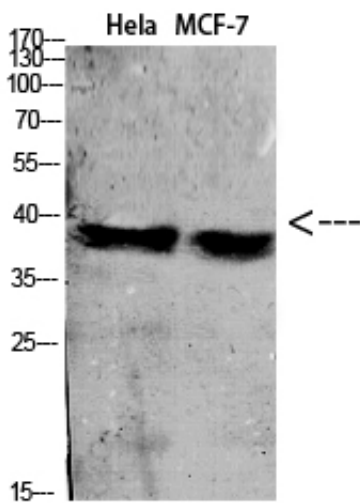
Other\_name : C5AR1; C5AR; C5R1; C5a anaphylatoxin chemotactic receptor; C5a-R; C5aR; CD88

Molecular Weight : 39KD

## Product Images



Western blot analysis of MOUSE-BRAIN RAT-SPLEEN lysis using C5AR1 antibody. Antibody was diluted at 1:1000. Secondary antibody was diluted at 1:20000



Western Blot analysis of various cells using Antibody diluted at 1:1000. Secondary antibody was diluted at 1:20000