



CD107b Polyclonal Antibody

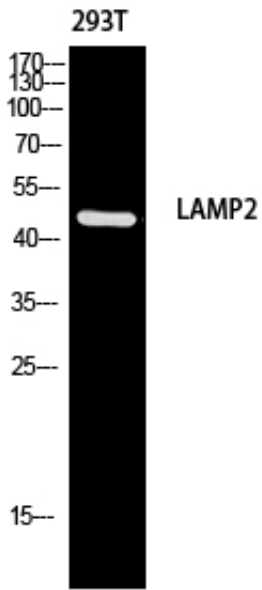
Catalog_no :	AT5711
Applications :	WB,IHC-p,ELISA
Reactivity :	Human
Category :	抗原抗体
Size :	100µg/50µg/20µg
Gene_name :	LAMP2
Protein_name :	Lysosome-associated membrane glycoprotein 2
Humangene_id	3920
:	
Humanswissprot	P13473
_no :	
Mousegene_id :	
Mouseswissprot	P17047
_no :	
Ratgene_id :	
Ratswissprot_no	
:	
Immunogen :	The antiserum was produced against synthesized peptide derived from the Internal region of human LAMP2. AA range:121-170
Specificity :	CD107b Polyclonal Antibody detects endogenous levels of CD107b protein.
Formulation :	Liquid in PBS containing 50% glycerol, 0.5% BSA and 0.02% sodium azide.
Source :	Rabbit
Dilution :	Western Blot: 1/500 - 1/2000. IHC-p: 1:100-1:300. ELISA: 1/10000. Not yet tested in other applications.
Purification :	The antibody was affinity-purified from rabbit antiserum by affinity-chromatography using epitope-specific immunogen.
Concentration :	1 mg/ml
Storage_stability	-20°C/1 year
:	
Msds :	MSDS_Antibody.pdf



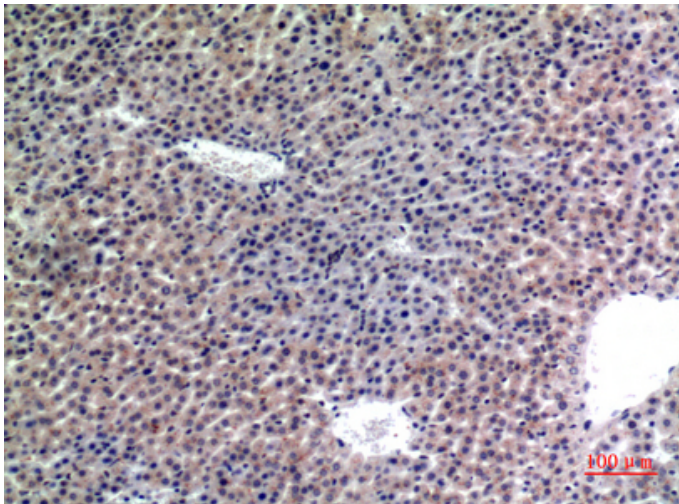
Other_name : LAMP2; Lysosome-associated membrane glycoprotein 2; LAMP-2; Lysosome-associated membrane protein 2; CD107 antigen-like family member B; CD107b

Molecular Weight : 45KD

Product Images



Western blot analysis of 293T using LAMP2 antibody. Antibody was diluted at 1:1000. Secondary antibody was diluted at 1:20000



Immunohistochemical analysis of paraffin-embedded mouse-liver, antibody was diluted at 1:100