

CD158e Polyclonal Antibody

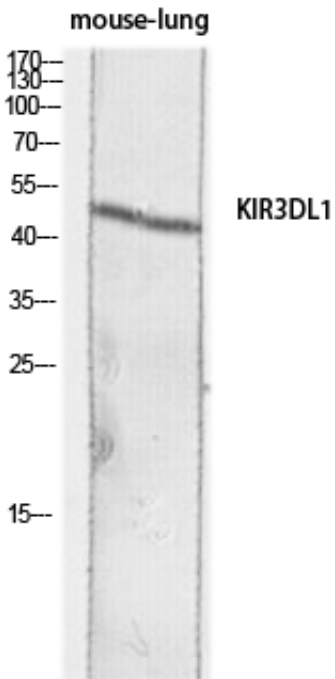
Catalog_no :	<u>AT5716</u>
Applications :	<u>WB,IHC-p,ELISA</u>
Reactivity :	<u>Human</u>
Category :	<u>抗原抗体</u>
Size :	<u>100µg/50µg/20µg</u>
Gene_name :	<u>KIR3DL1</u>
Protein_name :	<u>Killer cell immunoglobulin-like receptor 3DL1</u>
Humangene_id :	<u>3811</u>
Humanswissprot_no :	<u>P43629</u>
Mousegene_id :	<u></u>
Mouseswissprot_no :	<u>P83555</u>
Ratgene_id :	<u>353253</u>
Ratswissprot_no :	<u>P83556</u>
Immunogen :	<u>Synthesized peptide derived from Killer cell immunoglobulin-like receptor 3DL1 at AA range: 21-70</u>
Specificity :	<u>CD158e Polyclonal Antibody detects endogenous levels of CD158e protein.</u>
Formulation :	<u>Liquid in PBS containing 50% glycerol, 0.5% BSA and 0.02% sodium azide.</u>
Source :	<u>Rabbit</u>
Dilution :	<u>Western Blot: 1/500 - 1/2000. IHC-p: 1:100-1:300. ELISA: 1/10000. Not yet tested in other applications.</u>
Purification :	<u>The antibody was affinity-purified from rabbit antiserum by affinity-chromatography using epitope-specific immunogen.</u>
Concentration :	<u>1 mg/ml</u>
Storage_stability :	<u>-20°C/1 year</u>
Msds :	<u>MSDS_Antibody.pdf</u>



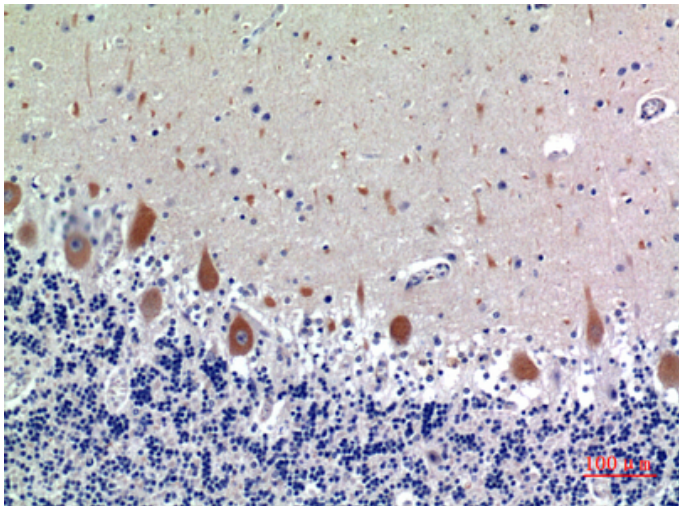
Other_name : KIR3DL1; CD158E; NKAT3; NKB1; Killer cell immunoglobulin-like receptor 3DL1; CD158 antigen-like family member E; HLA-BW4-specific inhibitory NK cell receptor; MHC class I NK cell receptor; Natural killer-associated transcript 3; NKAT-3; p70 natural killer cell receptor clones CL-2/CL-11; p70 NK receptor CL-2/CL-11; CD158e

Molecular Weight : 50KD

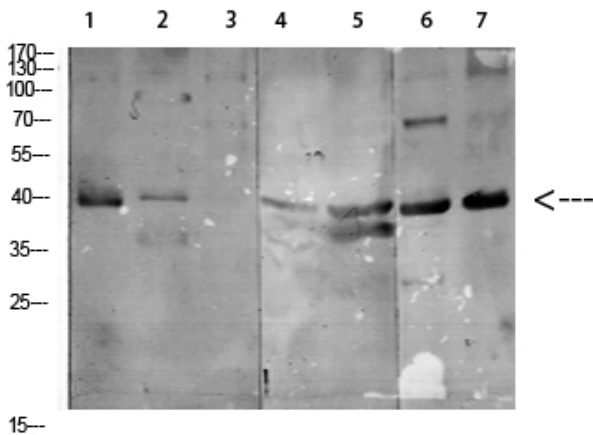
Product Images



Western blot analysis of mouse-lung lysis using KIR3DL1 antibody. Antibody was diluted at 1:1000. Secondary antibody was diluted at 1:20000



Immunohistochemical analysis of paraffin-embedded human-brain, antibody was diluted at 1:100



Western Blot analysis of various cells using Antibody diluted at 1:1000. Secondary antibody was diluted at 1:20000

1,3T3 2,SH-SY5Y 3,293T 4,K562 5,MOUSE-KIDNEY
6,MOUSE-HEART 7,MOUSE-BRAIN



专注二抗产品

Biodragon旗下品牌
