

CD296 Polyclonal Antibody

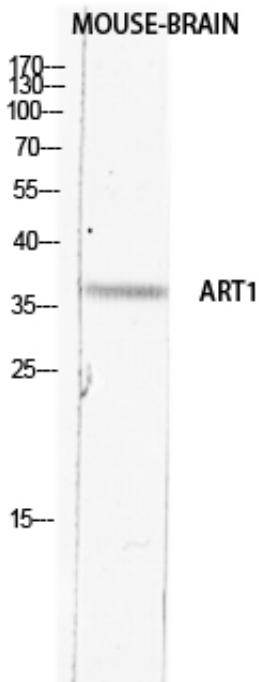
Catalog_no :	<u>AT5717</u>
Applications :	<u>WB,ELISA</u>
Reactivity :	<u>Human</u>
Category :	<u>抗原抗体</u>
Size :	<u>100µg/50µg/20µg</u>
Gene_name :	<u>ART1</u>
Protein_name :	<u>GPI-linked NAD(P)(+)-arginine ADP-ribosyltransferase 1</u>
Humangene_id :	<u>417</u>
Humanswissprot_no :	<u>P52961</u>
Mousegene_id :	<u>11870</u>
Mouseswissprot_no :	<u>Q60935</u>
Ratgene_id :	<u></u>
Ratswissprot_no :	<u></u>
Immunogen :	<u>The antiserum was produced against synthesized peptide derived from the Internal region of human ART1. AA range:51-100</u>
Specificity :	<u>CD296 Polyclonal Antibody detects endogenous levels of CD296 protein.</u>
Formulation :	<u>Liquid in PBS containing 50% glycerol, 0.5% BSA and 0.02% sodium azide.</u>
Source :	<u>Rabbit</u>
Dilution :	<u>Western Blot: 1/500 - 1/2000. ELISA: 1/10000. Not yet tested in other applications.</u>
Purification :	<u>The antibody was affinity-purified from rabbit antiserum by affinity-chromatography using epitope-specific immunogen.</u>
Concentration :	<u>1 mg/ml</u>
Storage_stability :	<u>-20°C/1 year</u>
Msds :	<u>MSDS_Antibody.pdf</u>



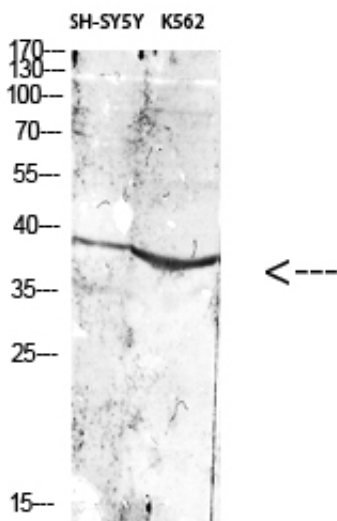
Other_name : ART1; GPI-linked NAD(P)(+)-arginine ADP-ribosyltransferase 1; ADP-ribosyltransferase C2 and C3 toxin-like 1; ARTC1; Mono(ADP-ribosyl)transferase 1; CD296

Molecular Weight : 37KD

Product Images



Western blot analysis of MOUSE-BRAIN lysis using ART1 antibody. Antibody was diluted at 1:2000. Secondary antibody was diluted at 1:20000



Western Blot analysis of various cells using Antibody diluted at 1:1000. Secondary antibody was diluted at 1:20000