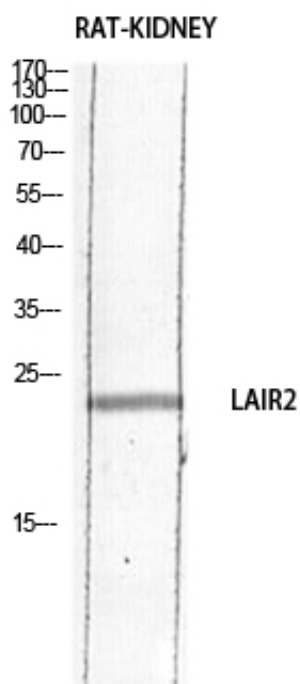




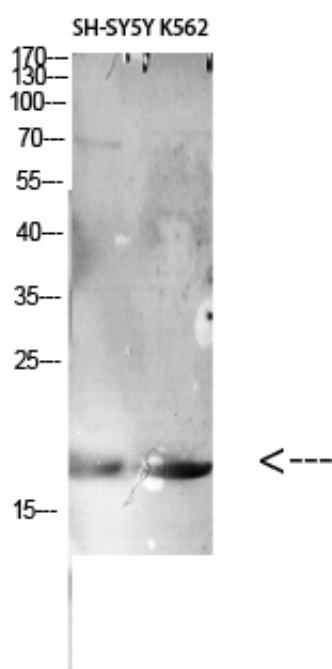
CD306 Polyclonal Antibody

Catalog_no :	AT5718
Applications :	WB,ELISA
Reactivity :	Human
Category :	抗原抗体
Size :	100µg/50µg/20µg
Gene_name :	LAIR2
Protein_name :	Leukocyte-associated immunoglobulin-like receptor 2
Humangene_id :	3904
Humanswissprot_no :	Q6ISS4
Ratgene_id :	
Ratswissprot_no :	
Immunogen :	The antiserum was produced against synthesized peptide derived from the Internal region of human LAIR2. AA range:21-70
Specificity :	CD306 Polyclonal Antibody detects endogenous levels of CD306 protein.
Formulation :	Liquid in PBS containing 50% glycerol, 0.5% BSA and 0.02% sodium azide.
Source :	Rabbit
Dilution :	Western Blot: 1/500 - 1/2000. ELISA: 1/10000. Not yet tested in other applications.
Purification :	The antibody was affinity-purified from rabbit antiserum by affinity-chromatography using epitope-specific immunogen.
Concentration :	1 mg/ml
Storage_stability :	-20°C/1 year
Msds :	MSDS_Antibody.pdf
Other_name :	LAIR2; CD306; Leukocyte-associated immunoglobulin-like receptor 2; LAIR-2; CD306
Molecular Weight :	20KD

Product Images



Western blot analysis of RAT-KIDNEY lysis using LAIR2 antibody. Antibody was diluted at 1:1000. Secondary antibody was diluted at 1:20000



Western Blot analysis of various cells using Antibody diluted at 1:1000. Secondary antibody was diluted at 1:20000