

IL-1F5 Polyclonal Antibody

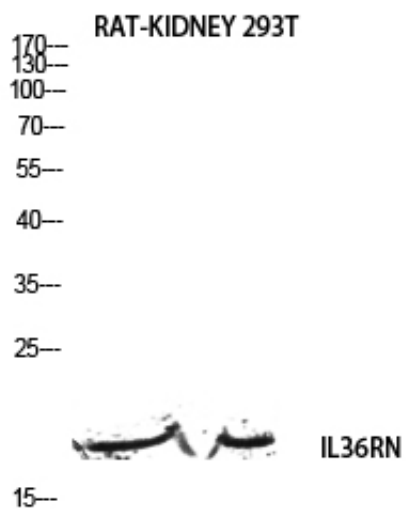
Catalog_no :	AT5720
Applications :	WB,ELISA
Reactivity :	Human,Mouse,Rat
Category :	抗原抗体
Size :	100µg/50µg/20µg
Gene_name :	IL36RN
Protein_name :	Interleukin-36 receptor antagonist protein
Humangene_id :	26525
Humanswissprot_no :	Q9UBH0
Mousegene_id :	54450
Mouseswissprot_no :	Q9QYY1
Ratgene_id :	
Ratswissprot_no :	
Immunogen :	The antiserum was produced against synthesized peptide derived from the Internal region of human IL36RN. AA range:1-50
Specificity :	IL-1F5 Polyclonal Antibody detects endogenous levels of IL-1F5 protein.
Formulation :	Liquid in PBS containing 50% glycerol, 0.5% BSA and 0.02% sodium azide.
Source :	Rabbit
Dilution :	Western Blot: 1/500 - 1/2000. ELISA: 1/10000. Not yet tested in other applications.
Purification :	The antibody was affinity-purified from rabbit antiserum by affinity-chromatography using epitope-specific immunogen.
Concentration :	1 mg/ml
Storage_stability :	-20°C/1 year
Msds :	MSDS_Antibody.pdf



Other_name : IL36RN; FIL1D; IL1F5; IL1HY1; IL1L1; IL1RP3; Interleukin-36 receptor antagonist protein; FIL1 delta; IL-1-related protein 3; IL-1RP3; Interleukin-1 HY1; IL-1HY1; Interleukin-1 delta; IL-1 delta; Interleukin-1 family member 5; IL-1F5; Interleukin-1 receptor antagonist homolog 1; IL-1ra homolog 1; Interleukin-1-like protein 1; IL-1L1

Molecular Weight : 17KD

Product Images



Western blot analysis of RAT-KIDNEY 293T lysis using IL36RN antibody. Antibody was diluted at 1:500. Secondary antibody was diluted at 1:20000