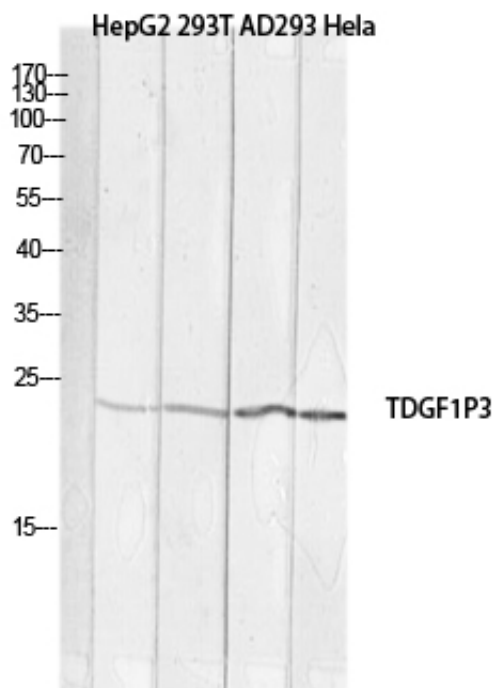




Cripto-3 Polyclonal Antibody

Catalog_no :	AT5721
Applications :	WB,ELISA
Reactivity :	Human
Category :	抗原抗体
Size :	100µg/50µg/20µg
Gene_name :	TDGF1P3
Protein_name :	Putative teratocarcinoma-derived growth factor 3
Humanswissprot_no :	P51864
Ratgene_id :	
Ratswissprot_no :	
Immunogen :	The antiserum was produced against synthesized peptide derived from the Internal region of human TDGF1P3. AA range:1-50
Specificity :	Cripto-3 Polyclonal Antibody detects endogenous levels of Cripto-3 protein.
Formulation :	Liquid in PBS containing 50% glycerol, 0.5% BSA and 0.02% sodium azide.
Source :	Rabbit
Dilution :	Western Blot: 1/500 - 1/2000. ELISA: 1/10000. Not yet tested in other applications.
Purification :	The antibody was affinity-purified from rabbit antiserum by affinity-chromatography using epitope-specific immunogen.
Concentration :	1 mg/ml
Storage_stability :	-20°C/1 year
Msd_s :	MSDS_Antibody.pdf
Other_name :	TDGF1P3; CRIPTO3; TDGF2; TDGF3; Putative teratocarcinoma-derived growth factor 3; Cripto-3 growth factor; Epidermal growth factor-like cripto protein CR3; Teratocarcinoma-derived growth factor 1 pseudogene 3
Molecular Weight :	21KD

Product Images



Western blot analysis of HepG2 293T AD293 HeLa lysis using TDGF1P3 antibody. Antibody was diluted at 1:1000. Secondary antibody was diluted at 1:20000