



## IL-22 Polyclonal Antibody

Catalog_no :	AT5722
Applications :	WB,ELISA
Reactivity :	Human,Mouse,Rat
Category :	抗原抗体
Size :	100µg/50µg/20µg
Gene_name :	IL22
Protein_name :	Interleukin-22
Humangene_id :	<a href="#">50616</a>
Humanswissprot_no :	<a href="#">Q9GZX6</a>
Mousegene_id :	<a href="#">50929</a>
Mouseswissprot_no :	<a href="#">Q9JIY9</a>
Ratgene_id :	
Ratswissprot_no :	
Immunogen :	The antiserum was produced against synthesized peptide derived from the C-terminal region of human IL22. AA range:121-170
Specificity :	IL-22 Polyclonal Antibody detects endogenous levels of IL-22 protein.
Formulation :	Liquid in PBS containing 50% glycerol, 0.5% BSA and 0.02% sodium azide.
Source :	Rabbit
Dilution :	Western Blot: 1/500 - 1/2000. ELISA: 1/10000. Not yet tested in other applications.
Purification :	The antibody was affinity-purified from rabbit antiserum by affinity-chromatography using epitope-specific immunogen.
Concentration :	1 mg/ml
Storage_stability :	-20°C/1 year
Msds :	<a href="#">MSDS_Antibody.pdf</a>



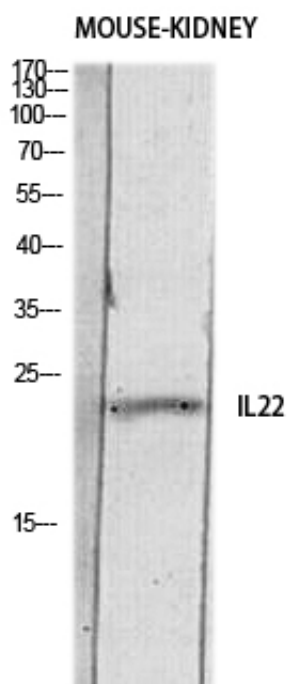
Other\_name : IL22; ILTIF; ZCYTO18; Interleukin-22; IL-22; Cytokine Zcyto18; IL-10-related T-cell-derived-inducible factor; IL-TIF

---

Molecular Weight : 22KD

---

## Product Images



Western blot analysis of MOUSE-KIDNEY lysis using IL22 antibody. Antibody was diluted at 1:500. Secondary antibody was diluted at 1:20000