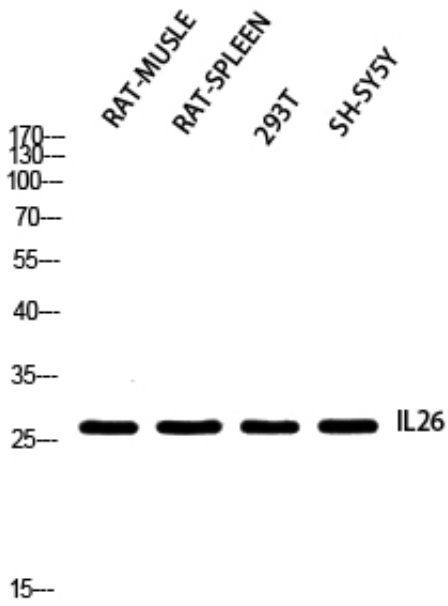




## IL-26 Polyclonal Antibody

Catalog_no :	AT5723
Applications :	WB,ELISA
Reactivity :	Human
Category :	抗原抗体
Size :	100µg/50µg/20µg
Gene_name :	IL26
Protein_name :	Interleukin-26
Humangene_id :	<a href="#">55801</a>
Humanswissprot_no :	<a href="#">Q9NPH9</a>
Ratgene_id :	
Ratswissprot_no :	
Immunogen :	Synthesized peptide derived from Interleukin-26 at AA range: 21-70
Specificity :	IL-26 Polyclonal Antibody detects endogenous levels of IL-26 protein.
Formulation :	Liquid in PBS containing 50% glycerol, 0.5% BSA and 0.02% sodium azide.
Source :	Rabbit
Dilution :	Western Blot: 1/500 - 1/2000. ELISA: 1/10000. Not yet tested in other applications.
Purification :	The antibody was affinity-purified from rabbit antiserum by affinity-chromatography using epitope-specific immunogen.
Concentration :	1 mg/ml
Storage_stability :	-20°C/1 year
Msds :	MSDS_Antibody.pdf
Other_name :	IL26; AK155; Interleukin-26; IL-26; Protein AK155
Molecular Weight :	25KD

## Product Images



Western blot analysis of RAT-MUSCLE RAT-SPLEEN 293T SH-SY5Y using IL26 antibody. Antibody was diluted at 1:2000. Secondary antibody was diluted at 1:20000