



IL-1F10 Polyclonal Antibody

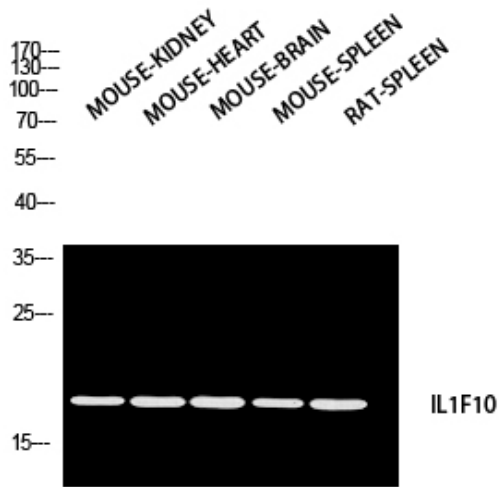
Catalog_no :	AT5725
Applications :	WB,IHC-p,ELISA
Reactivity :	Human
Category :	抗原抗体
Size :	100µg/50µg/20µg
Gene_name :	IL1F10
Protein_name :	Interleukin-1 family member 10
Humangene_id :	84639
Humanswissprot_no :	Q8WWZ1
Mousegene_id :	215274
Mouseswissprot_no :	Q8R459
Ratgene_id :	
Ratswissprot_no :	
Immunogen :	Synthesized peptide derived from Interleukin-1 family member 10 at AA range: 101-150
Specificity :	IL-1F10 Polyclonal Antibody detects endogenous levels of IL-1F10 protein.
Formulation :	Liquid in PBS containing 50% glycerol, 0.5% BSA and 0.02% sodium azide.
Source :	Rabbit
Dilution :	Western Blot: 1/500 - 1/2000. IHC-p: 1:100-1:300. ELISA: 1/10000. Not yet tested in other applications.
Purification :	The antibody was affinity-purified from rabbit antiserum by affinity-chromatography using epitope-specific immunogen.
Concentration :	1 mg/ml
Storage_stability :	-20°C/1 year
Msds :	MSDS_Antibody.pdf



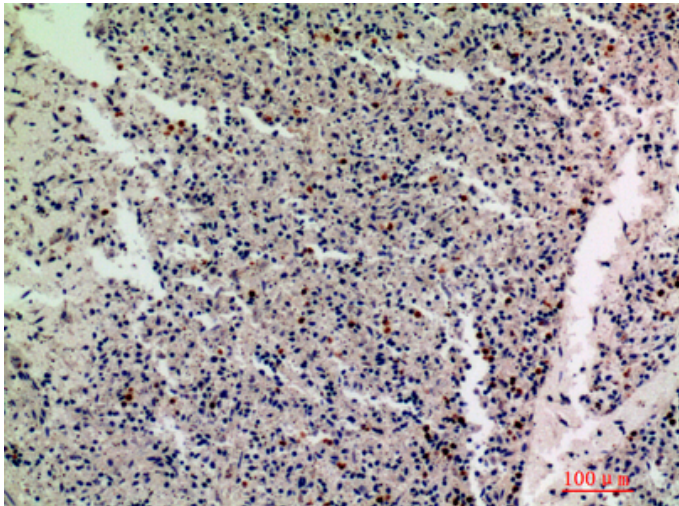
Other_name : IL1F10; FIL1T; IL1HY2; FKSG75; Interleukin-1 family member 10; IL-1F10; FIL1 theta;
Interleukin-1 HY2; IL-1HY2; Interleukin-1 theta; IL-1 theta

Molecular Weight : 17KD

Product Images



Western blot analysis of MOUSE-KIDNEY MOUSE-HEART MOUSE-BRAIN MOUSE-SPLEEN RAT-SPLEEN using IL1F10 antibody. Antibody was diluted at 1:2000. Secondary antibody was diluted at 1:20000



Immunohistochemical analysis of paraffin-embedded human-spleen, antibody was diluted at 1:200