

Nodal Polyclonal Antibody

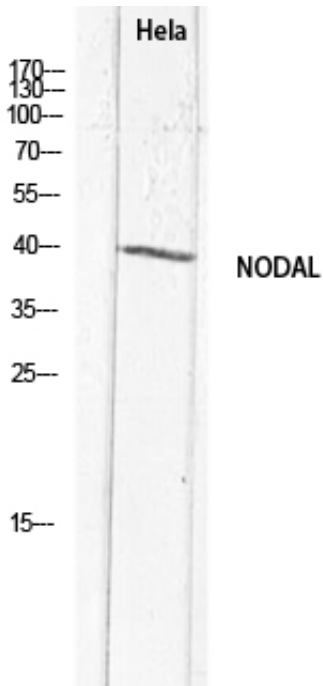
Catalog_no :	AT5727
Applications :	WB,IHC-p,ELISA
Reactivity :	Human,Mouse,Rat
Category :	抗原抗体
Size :	100µg/50µg/20µg
Gene_name :	NODAL
Protein_name :	Nodal homolog
Humangene_id	4838
:	
Humanswissprot	Q96S42
_no :	
Mousegene_id :	18119
Mouseswissprot	P43021
_no :	
Ratgene_id :	
Ratswissprot_no	
:	
Immunogen :	The antiserum was produced against synthesized peptide derived from the C-terminal region of human NODAL. AA range:294-343
Specificity :	Nodal Polyclonal Antibody detects endogenous levels of Nodal protein.
Formulation :	Liquid in PBS containing 50% glycerol, 0.5% BSA and 0.02% sodium azide.
Source :	Rabbit
Dilution :	Western Blot: 1/500 - 1/2000. IHC-p: 1:100-1:300. ELISA: 1/10000. Not yet tested in other applications.
Purification :	The antibody was affinity-purified from rabbit antiserum by affinity-chromatography using epitope-specific immunogen.
Concentration :	1 mg/ml
Storage_stability	-20°C/1 year
:	
Msds :	MSDS_Antibody.pdf



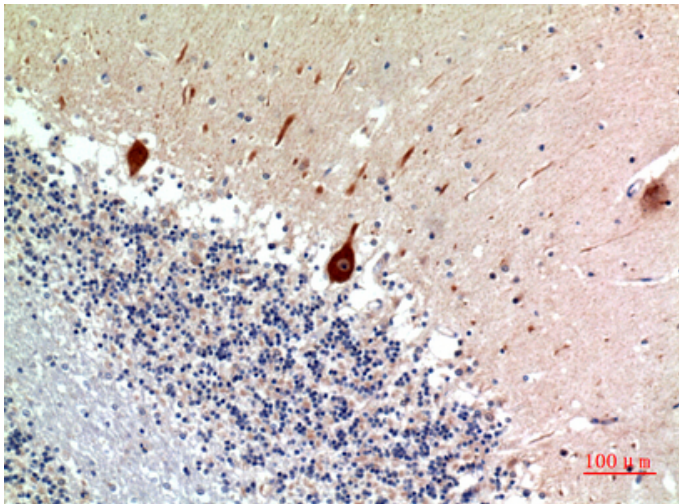
Other_name : NODAL; Nodal homolog

Molecular Weight : 40KD

Product Images



Western blot analysis of HeLa lysis using NODAL antibody.. Secondary antibody was diluted at 1:20000



Immunohistochemical analysis of paraffin-embedded human-brain, antibody was diluted at 1:100