

Synuclein- α Polyclonal Antibody

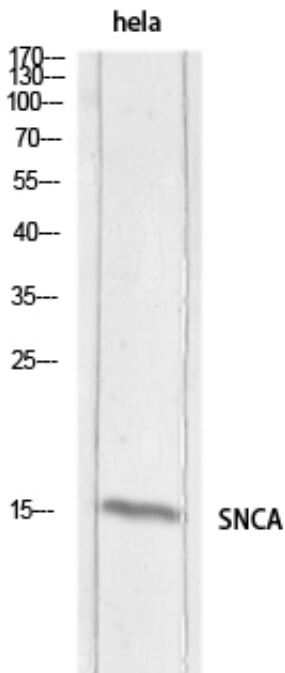
Catalog_no :	<u>AT5731</u>
Applications :	<u>WB,IHC-p,ELISA</u>
Reactivity :	<u>Human,Mouse,Rat</u>
Category :	<u>抗原抗体</u>
Size :	<u>100μg/50μg/20μg</u>
Gene_name :	<u>SNCA</u>
Protein_name :	<u>Alpha-synuclein</u>
Humangene_id :	<u>6622</u>
Humanswissprot_no :	<u>P37840</u>
Mousegene_id :	<u>20617</u>
Mouseswissprot_no :	<u>O55042</u>
Ratgene_id :	<u>29219</u>
Ratswissprot_no :	<u>P37377</u>
Immunogen :	<u>The antiserum was produced against synthesized peptide derived from the Internal region of human SNCA. AA range:21-70</u>
Specificity :	<u>Synuclein-α Polyclonal Antibody detects endogenous levels of Synuclein-α protein.</u>
Formulation :	<u>Liquid in PBS containing 50% glycerol, 0.5% BSA and 0.02% sodium azide.</u>
Source :	<u>Rabbit</u>
Dilution :	<u>Western Blot: 1/500 - 1/2000. IHC-p: 1:100-1:300. ELISA: 1/10000. Not yet tested in other applications.</u>
Purification :	<u>The antibody was affinity-purified from rabbit antiserum by affinity-chromatography using epitope-specific immunogen.</u>
Concentration :	<u>1 mg/ml</u>
Storage_stability :	<u>-20°C/1 year</u>
Msds :	<u>MSDS_Antibody.pdf</u>



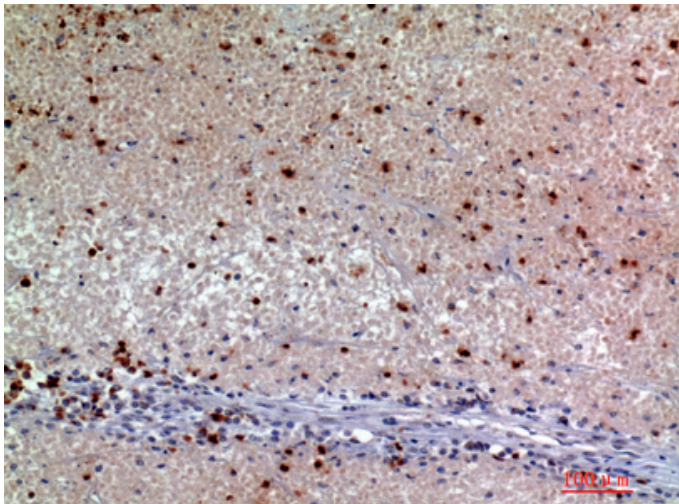
Other_name : SNCA; NACP; PARK1; Alpha-synuclein; Non-A beta component of AD amyloid; Non-A4 component of amyloid precursor; NACP

Molecular Weight : 15KD

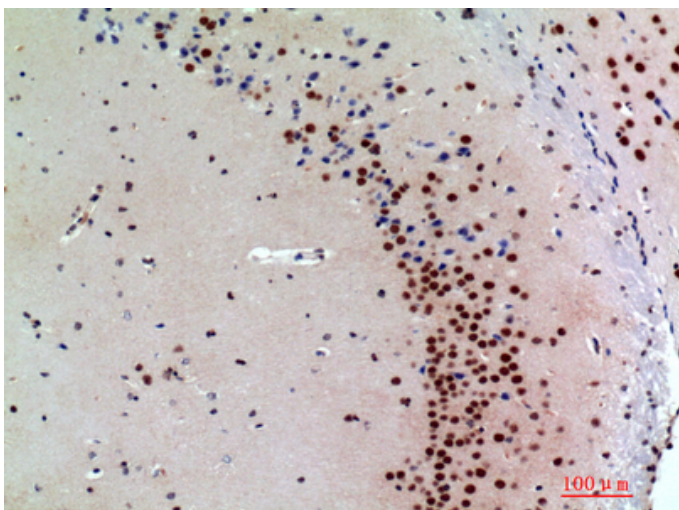
Product Images



Western blot analysis of HeLa lysis using SNCA antibody..
Secondary antibody was diluted at 1:20000



Immunohistochemical analysis of paraffin-embedded human kidney cancer, antibody was diluted at 1:200



Immunohistochemical analysis of paraffin-embedded mouse brain, antibody was diluted at 1:200



专注二抗产品

Biodragon旗下品牌
