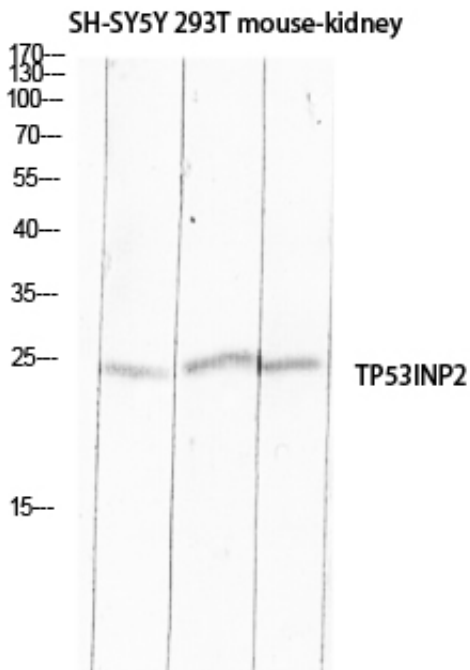


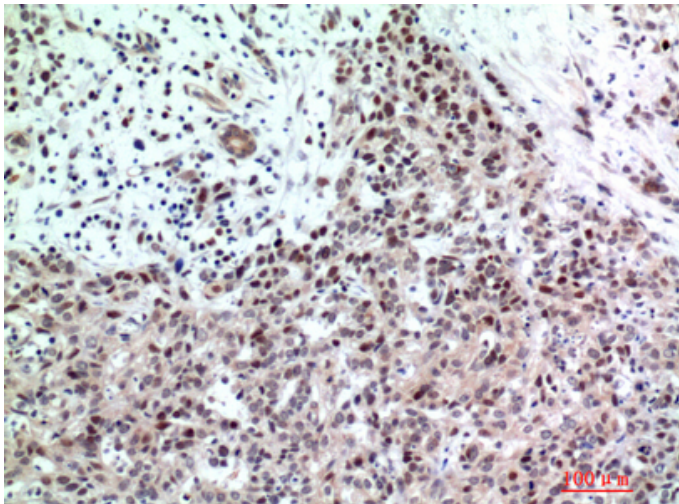
## TP53INP2 Polyclonal Antibody

Catalog_no :	AT5733
Applications :	WB,IHC-p,ELISA
Reactivity :	Human
Category :	抗原抗体
Size :	100µg/50µg/20µg
Gene_name :	TP53INP2
Protein_name :	Tumor protein p53-inducible nuclear protein 2
Humangene_id :	<a href="#">58476</a>
Humanswissprot_no :	<a href="#">Q8IXH6</a>
Immunogen :	The antiserum was produced against synthesized peptide derived from the C-terminal region of human TP53INP2. AA range:161-210
Specificity :	TP53INP2 Polyclonal Antibody detects endogenous levels of TP53INP2 protein.
Formulation :	Liquid in PBS containing 50% glycerol, 0.5% BSA and 0.02% sodium azide.
Source :	Rabbit
Dilution :	Western Blot: 1/500 - 1/2000. IHC-p: 1:100-1:300. ELISA: 1/10000. Not yet tested in other applications.
Purification :	The antibody was affinity-purified from rabbit antiserum by affinity-chromatography using epitope-specific immunogen.
Concentration :	1 mg/ml
Storage_stability :	-20°C/1 year
Msds :	MSDS_Antibody.pdf
Other_name :	TP53INP2; C20orf110; DOR; PINH; Tumor protein p53-inducible nuclear protein 2; Diabetes and obesity-regulated gene; p53-inducible protein U; PIG-U
Molecular Weight :	24KD

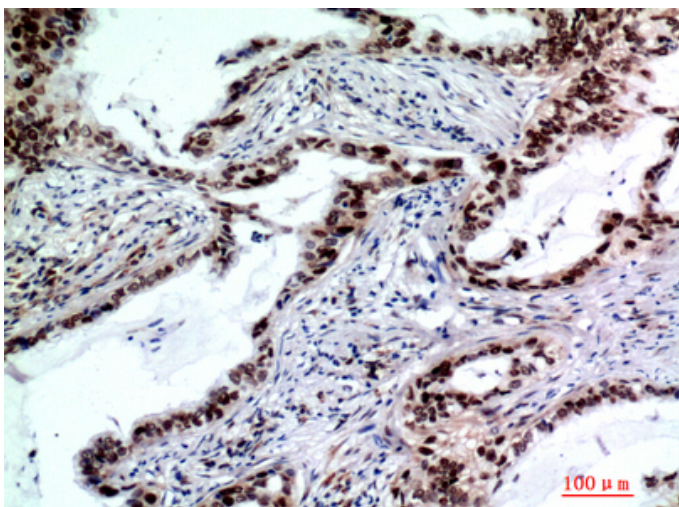
## Product Images



Western blot analysis of SH-SY5Y 293T mouse-kidney lysis using TP53INP2 antibody. Antibody was diluted at 1:500. Secondary antibody was diluted at 1:20000 cells nucleus extracted by Minute TM Cytoplasmic and Nuclear Fractionation kit (SC-003, Inventbiotech, MN, USA).



Immunohistochemical analysis of paraffin-embedded human-breast-cancer, antibody was diluted at 1:200



Immunohistochemical analysis of paraffin-embedded human-lungcancer, antibody was diluted at 1:200



**专注二抗产品**

Biodragon旗下品牌

---