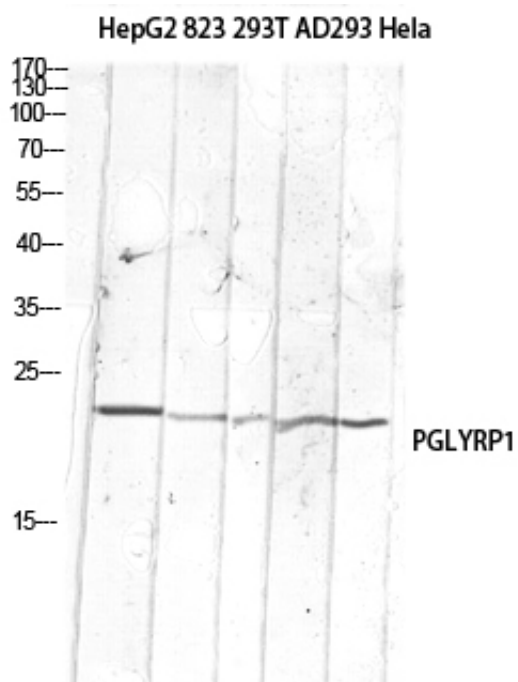




## PGLYRP1 Polyclonal Antibody

Catalog_no :	AT5734
Applications :	WB,ELISA
Reactivity :	Human
Category :	抗原抗体
Size :	100µg/50µg/20µg
Gene_name :	PGLYRP1
Protein_name :	Peptidoglycan recognition protein 1
Humangene_id :	<a href="#">8993</a>
Humanswissprot_no :	<a href="#">O75594</a>
Immunogen :	The antiserum was produced against synthesized peptide derived from the Internal region of human PGLYRP1. AA range:131-180
Specificity :	PGLYRP1 Polyclonal Antibody detects endogenous levels of PGLYRP1 protein.
Formulation :	Liquid in PBS containing 50% glycerol, 0.5% BSA and 0.02% sodium azide.
Source :	Rabbit
Dilution :	Western Blot: 1/500 - 1/2000. ELISA: 1/10000. Not yet tested in other applications.
Purification :	The antibody was affinity-purified from rabbit antiserum by affinity-chromatography using epitope-specific immunogen.
Concentration :	1 mg/ml
Storage_stability :	-20°C/1 year
Msds :	MSDS_Antibody.pdf
Other_name :	PGLYRP1; PGLYRP; PGRP; TNFSF3L; SBBI68; Peptidoglycan recognition protein 1; Peptidoglycan recognition protein short; PGRP-S
Molecular Weight :	21KD

## Product Images



Western blot analysis of HepG2 823-AV 293T AD293 Hela lysis using PGLYRP1 antibody. Antibody was diluted at 1:1000. Secondary antibody was diluted at 1:20000